

BUSCH ADDITION (DIVISIONS 1 & 2)

SEC. 15, 16 & 21 TWP. 21 N. RGE. 1 E.

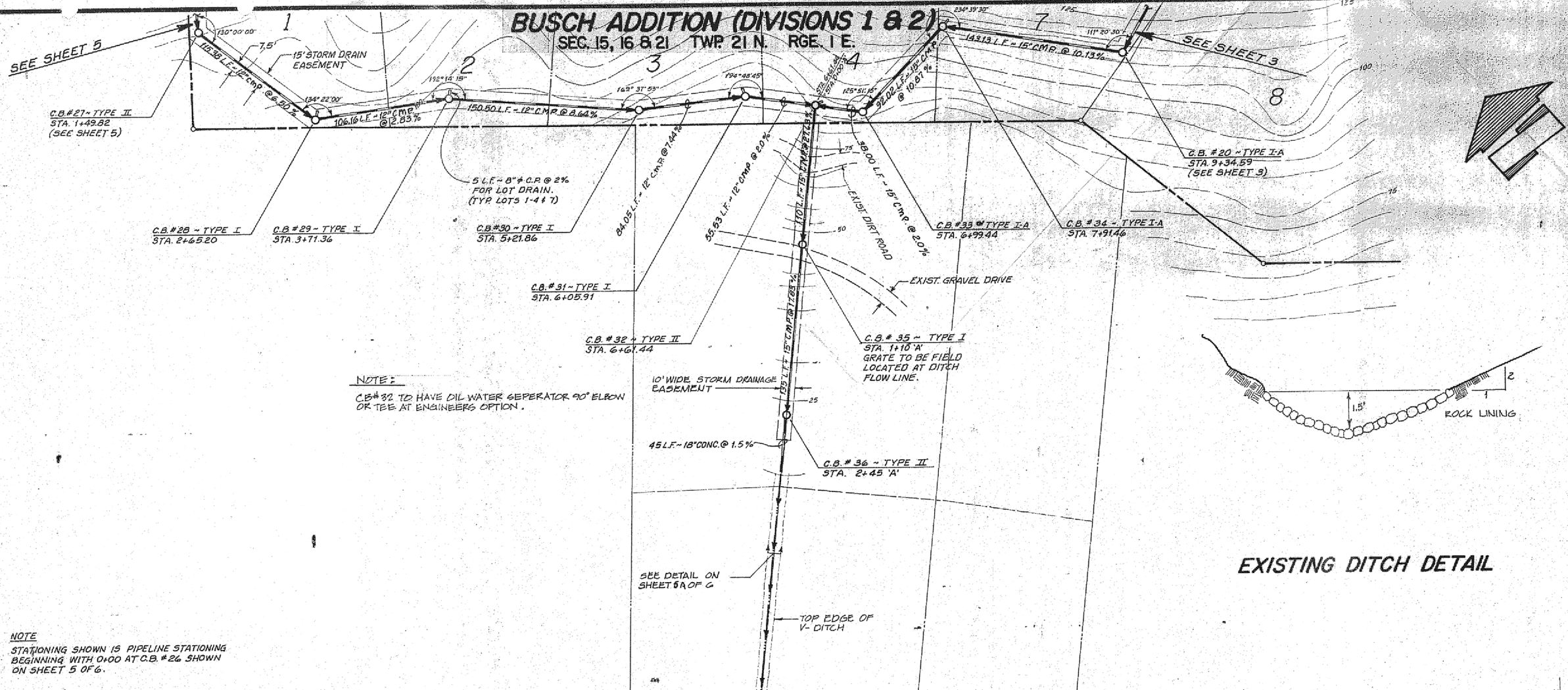
APPROVED: FOR PRIVATE STORM DRAINAGE AND ACCESS ONLY

PUBLIC WORKS DIRECTOR DATE

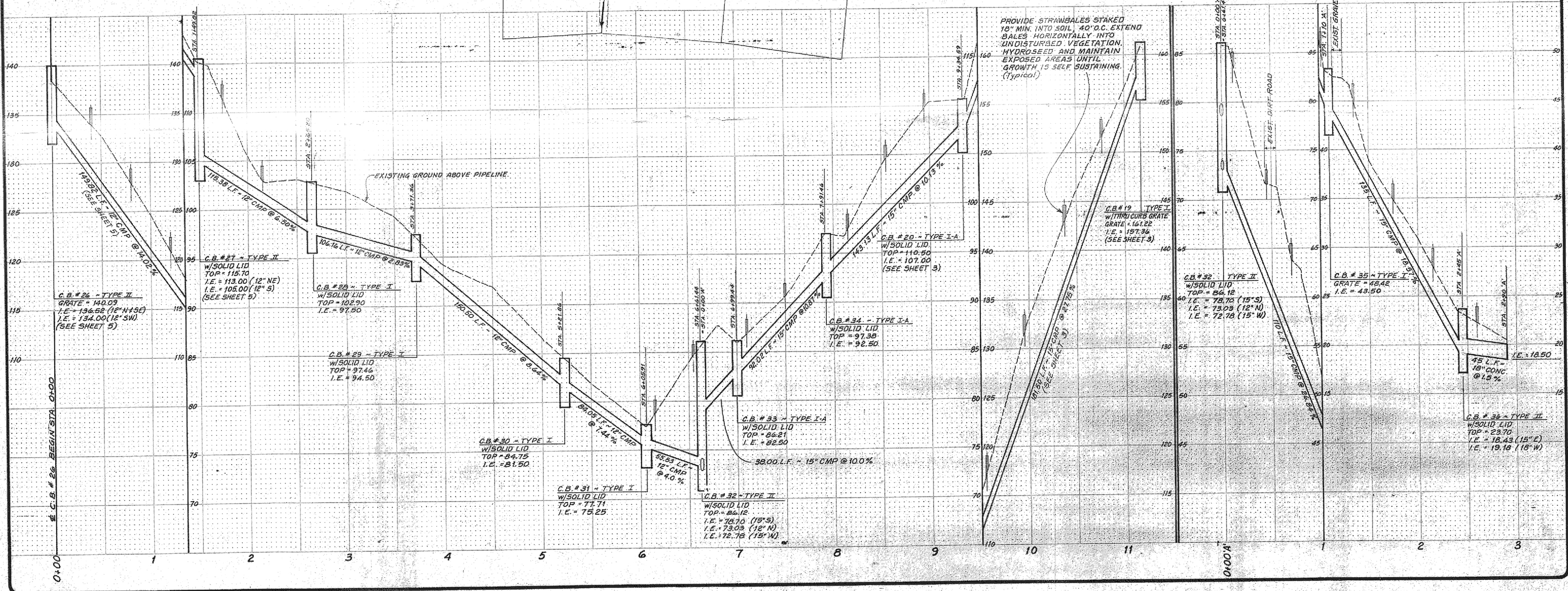
APPROVED: FOR REVISED PRIVATE STORM DRAINAGE

Donald Anderson 3-29-85

PUBLIC WORKS DIRECTOR DATE



NOTE:
STATIONING SHOWN IS PIPELINE STATIONING BEGINNING WITH 0+00 AT C.B. #26 SHOWN ON SHEET 5 OF 6.



REVISIONS

DESIGN: G.M.M. CHECKED: DATE: 10-84
DRAWN: J.H.D. SCALE: 1" = 50' / 1" = 5'



BUSCH ADDITION
DRAINAGE & OUTFALL PLAN & PROFILE
CITIZENS SERVICE CORP.
BOTHELL, WASHINGTON

STEPAN & ASSOCIATES, Inc.
Professional Planning, Surveying, Engineering, and Construction
930 So. 334th Street, Suite A, Federal Way, Washington 98003
Telephone: (206) 937-7851, Seattle (206) 427-5771