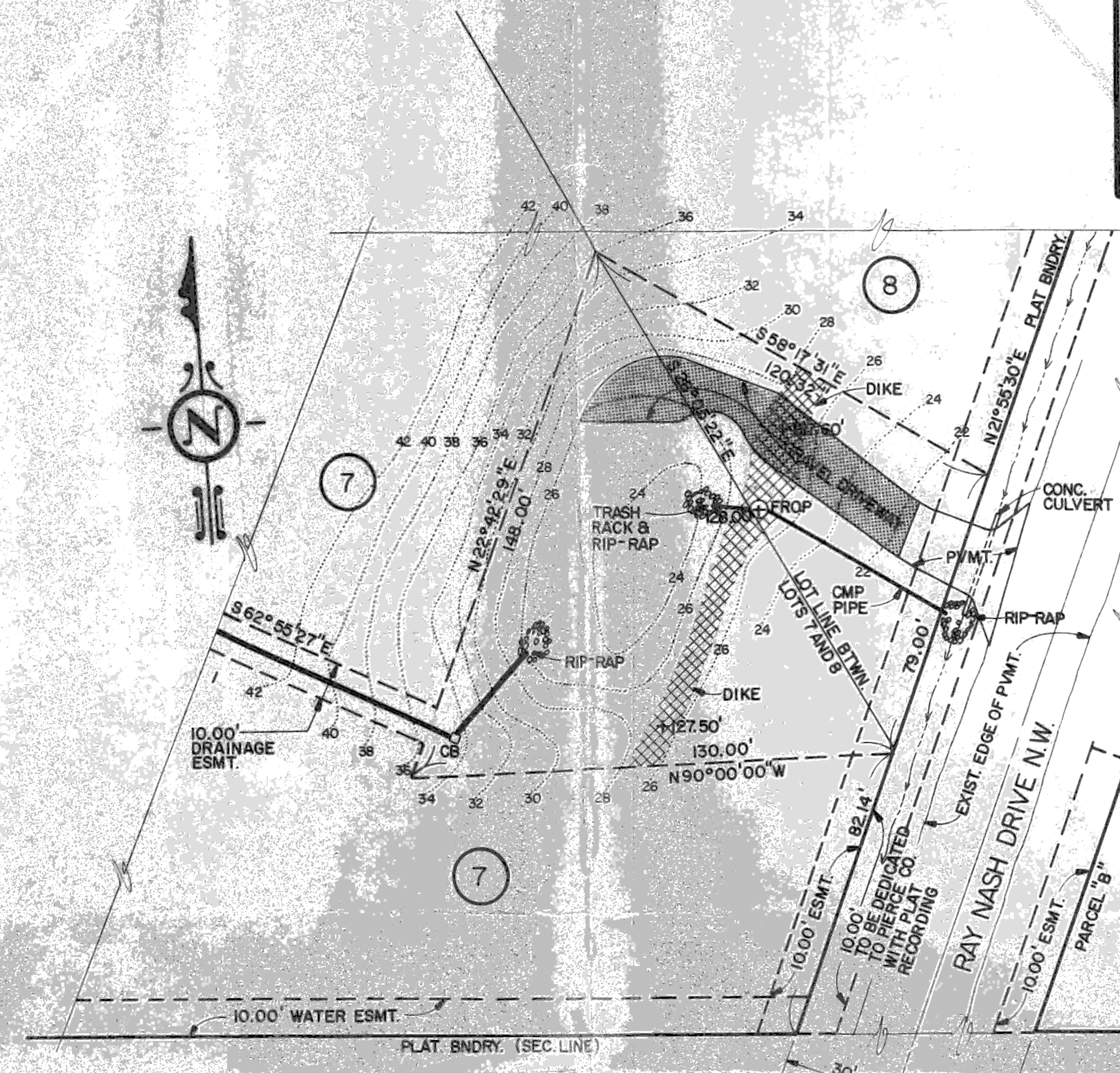
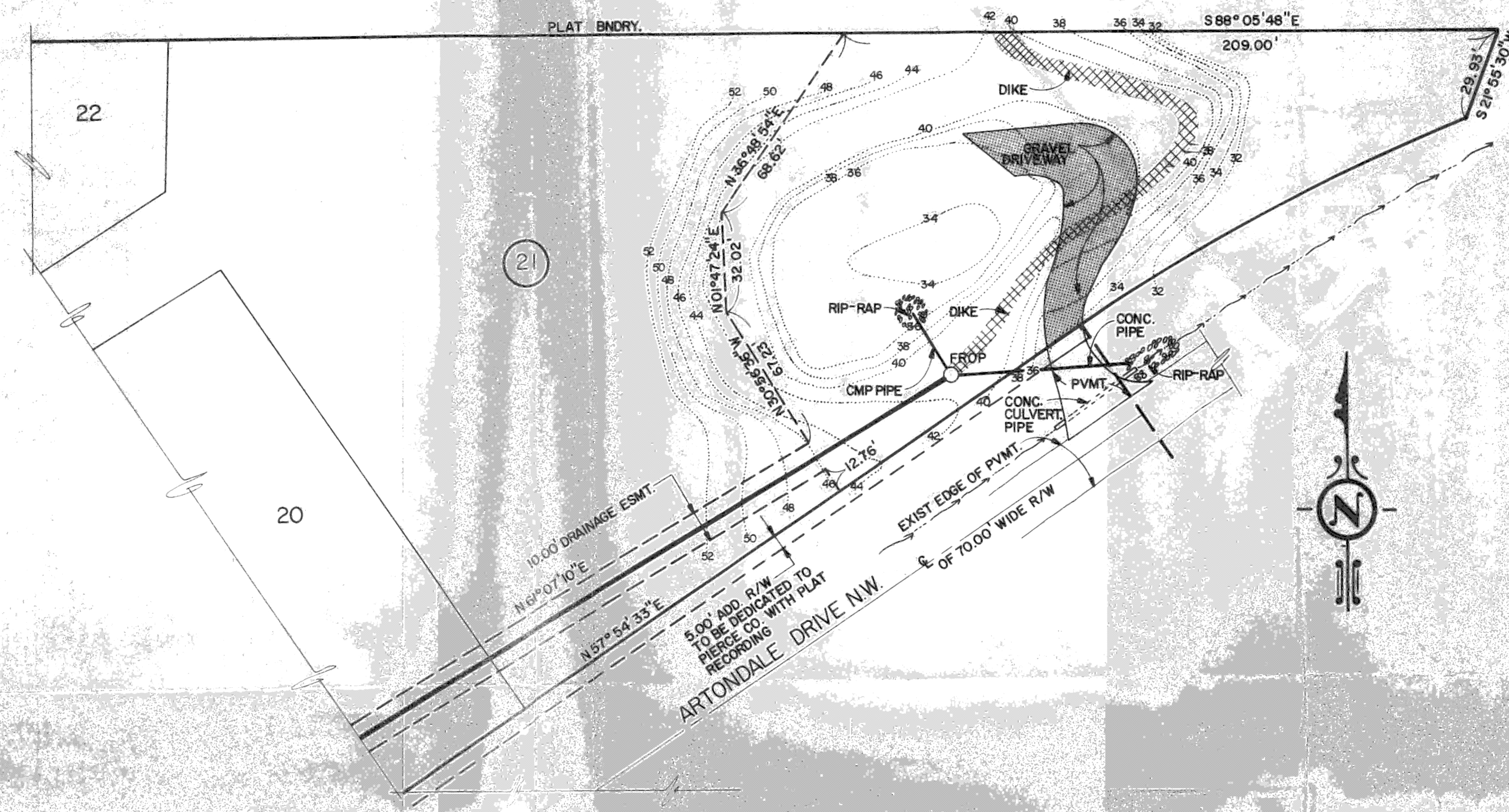
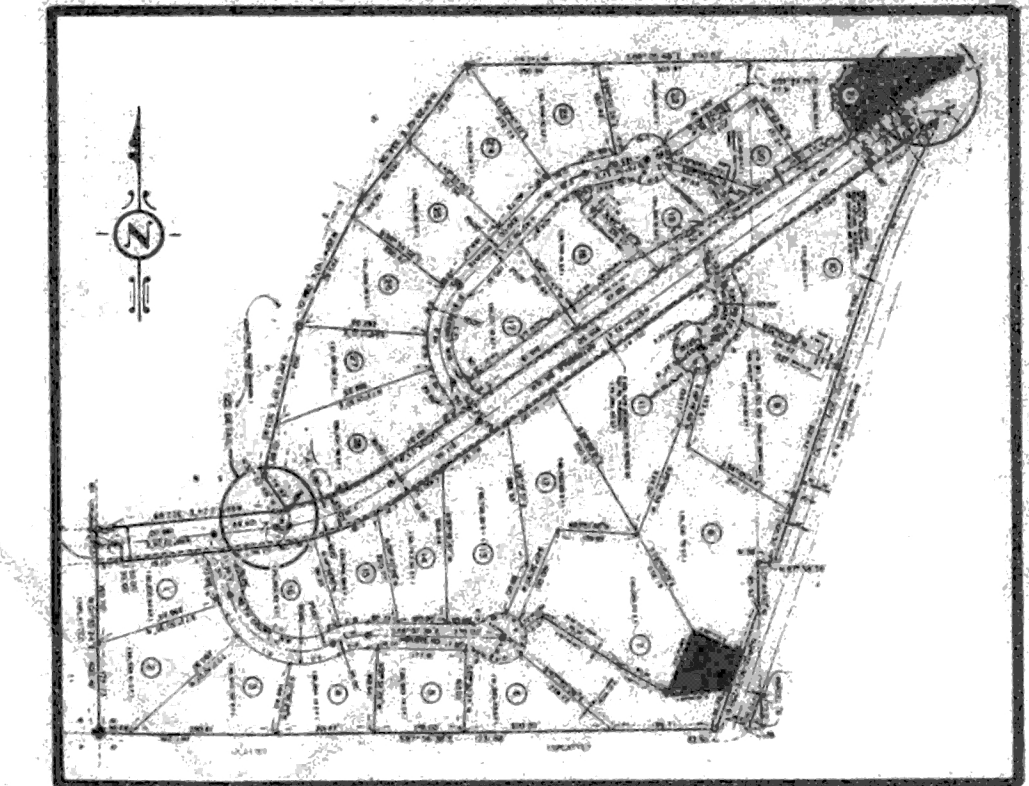


# KOPACHUCK RIDGE ESTATES DIVISION NO.3

A PORTION OF SW 1/4, SEC. 15, TWP. 21N, RGE 1E, W.M.  
PIERCE COUNTY, WASHINGTON



RECEIVED  
PIERCE COUNTY PUBLIC WORKS  
DEVELOPMENT ENGINEERING SECTION  
JAN 24 1988

A PORTION OF SW 1/4, SEC. 15, TWP. 21N, RGE 1E, W.M.

				<b>KOPACHUCK RIDGE ESTATES DIVISION NO.3</b> RETENTION PONDS ASBUILTS		SHEET   OF 
"FACTORIA EAST" SUITE 101 • 12828 S.E. 40th LANE BELLEVUE, WA. 98006 • TELEPHONE (206) 641-5810		FOR: CITIZENS SERVICE CORP ONE NEWPORT 3605 132 ND AVE S.E. SUITE 214 BELLEVUE, WA. 98006 (206) 644-5400		JOB NO. 6003 DRAWN SP/DLS CHECKED ECS DATE 1/14/88		