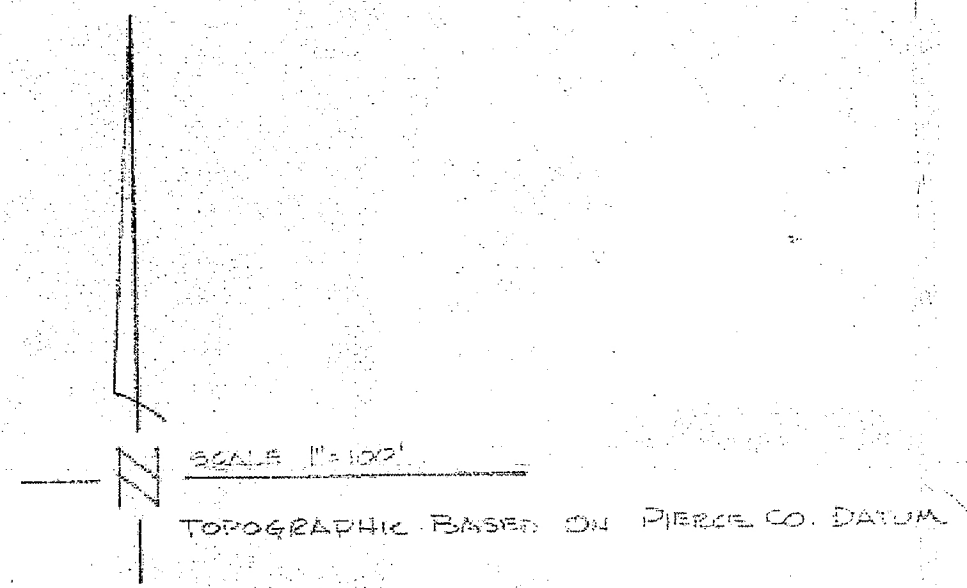
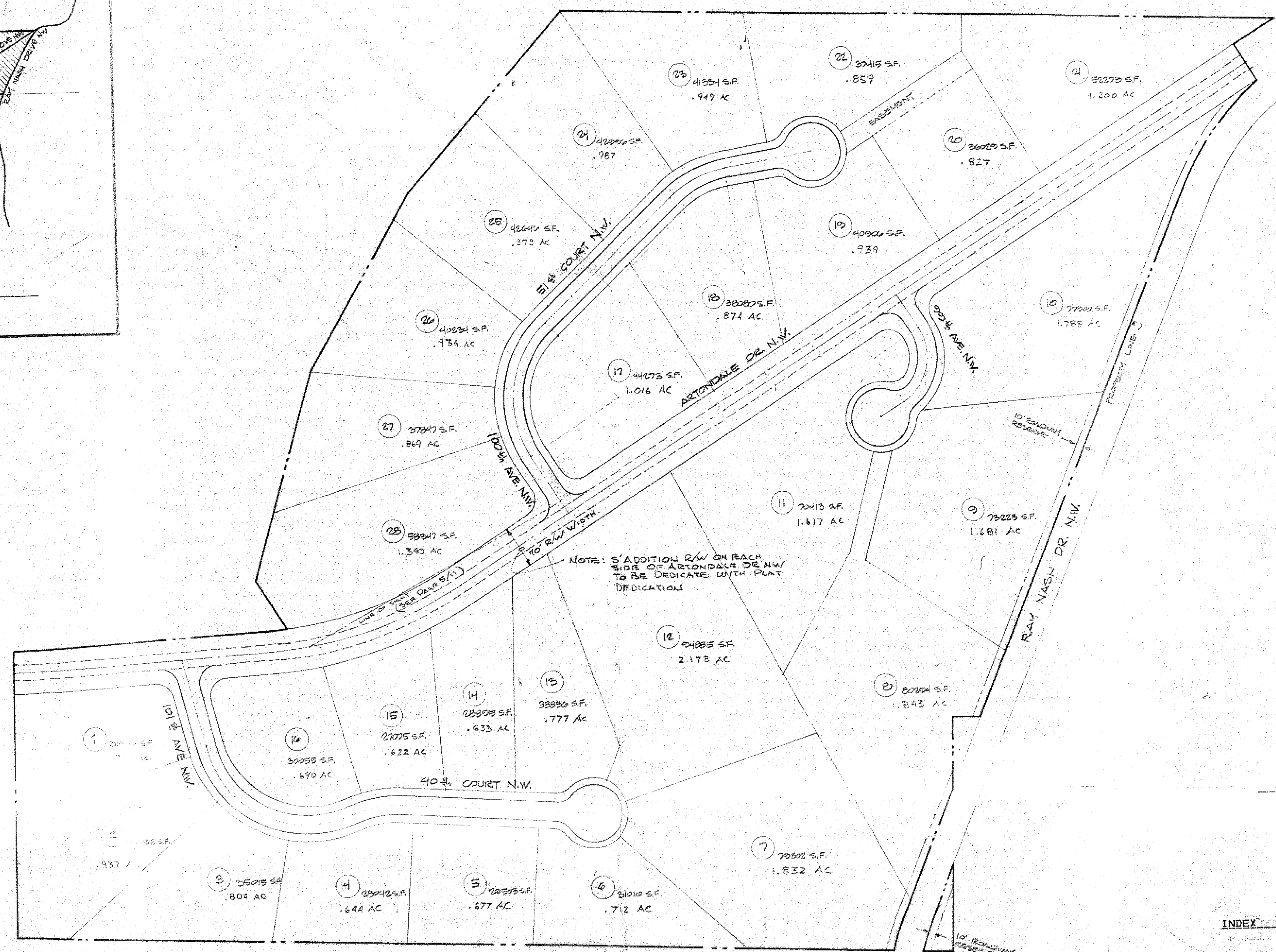
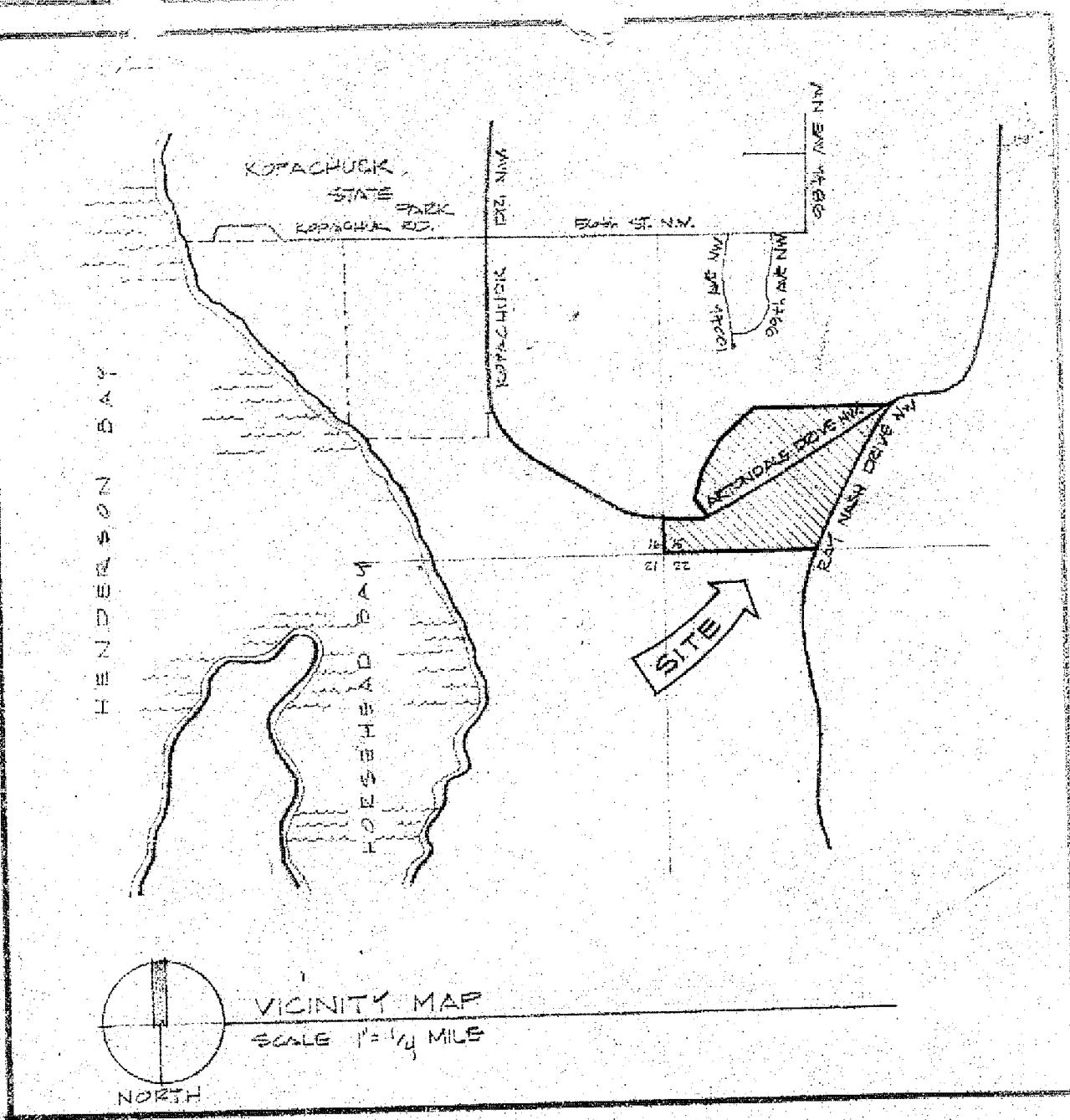


KOPACHUCK RIDGE ESTATES

DIV. NO. 3

A PORTION OF SW^{1/4}, SEC. 15, TWP. 21 N., RGE. 1 E., WM.
PIERCE COUNTY, WASHINGTON

APPROVED FOR PRIVATE SEWER DRAINAGE AND ACCESS ONLY
Richard Anderson
 PUBLIC WORKS DIRECTOR
 1-9-87



INDEX

SHEET 1	COVER SHEET
2	STORM DRAINAGE PLAN
3	STORM DRAIN & ROAD ; PLAN/PROFILES
4	STORM DRAIN & ROAD ; PLAN/PROFILES
5	STORM DRAIN ; PLAN/PROFILE
6	ROAD APPROACH & SIGHT DISTANCE, ARTONDALE & 100TH AVE.
7	TOPOGRAPHIC MAP
8	DOWNSTREAM DRAINAGE ANALYSIS / EROSION CONTROL PLAN
9	DRAIN PLAN/PROFILE, RAYNASH DRIVE
10	DRAIN PLAN/PROFILE, ARTONDALE DR. DOWNSTREAM
11	DETAILS
12	INTERSECTION DETAILS, ARTONDALE/RAYNASH
13	R/D PONDS DETAILS

DATUM = BM. PIERCE CO. #7 3.3 MILES N. OF TIDAL A 1935, CENTER OF CROSSROADS NAIL/WASHER. ELEV. 63.4

JOB NO. 4079
 DATE 7-19-86
 DESIGNER J.R. CLARK
 CHECKED G.S.
 REVISIONS:
 #1 - PIERCE CO. REVIEW - 6/30/86
 #2 - PIERCE CO. REVIEW - 7/25/86
 #3 - PIERCE CO. REVIEW - 11/7/86
 #4 - PIERCE CO. REVIEW - 11/25/86
 #5 - PIERCE CO. REVIEW - 12/2/87
 #6 - PIERCE CO. REVIEW - 12/2/87

SPROUT ENGINEERS INC.
 1220 E. 40th AVE.
 BELLEVUE, WA 98008
 TELEPHONE (206) 841-5810

KOPACHUCK RIDGE ESTATES DIVISION NO. 3
 FOR CITIZENS SERVICE CORPORATION
 ONE NEWPORT AVE. SE. SUITE 214
 BELLEVUE, WA 98004 (206) 844-5400

SHEET 1 OF 13