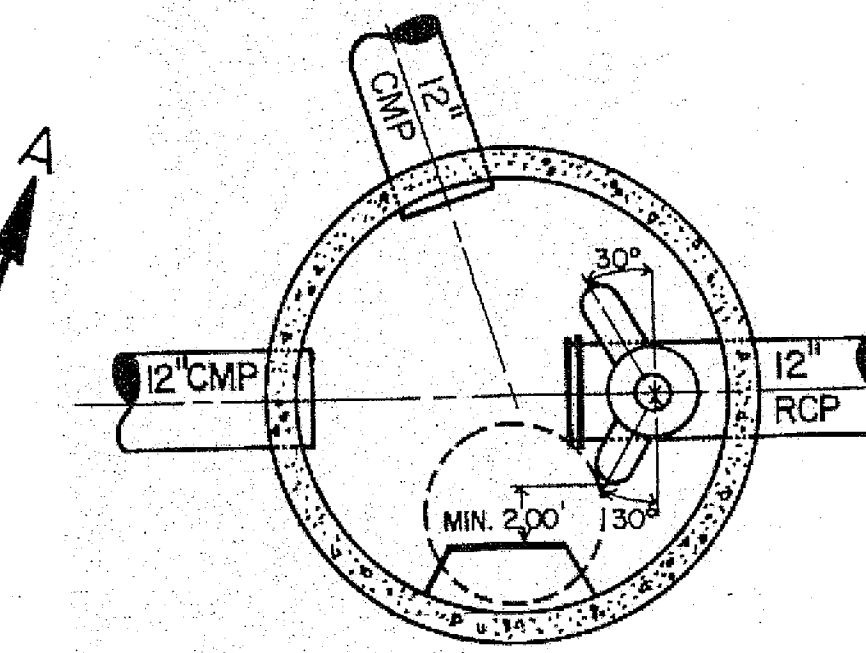
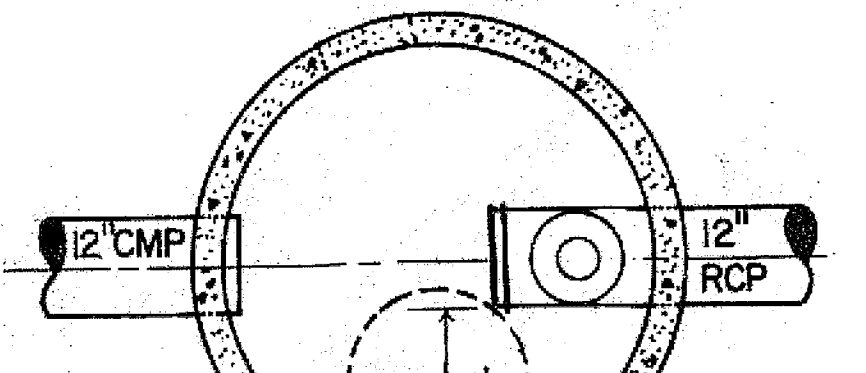
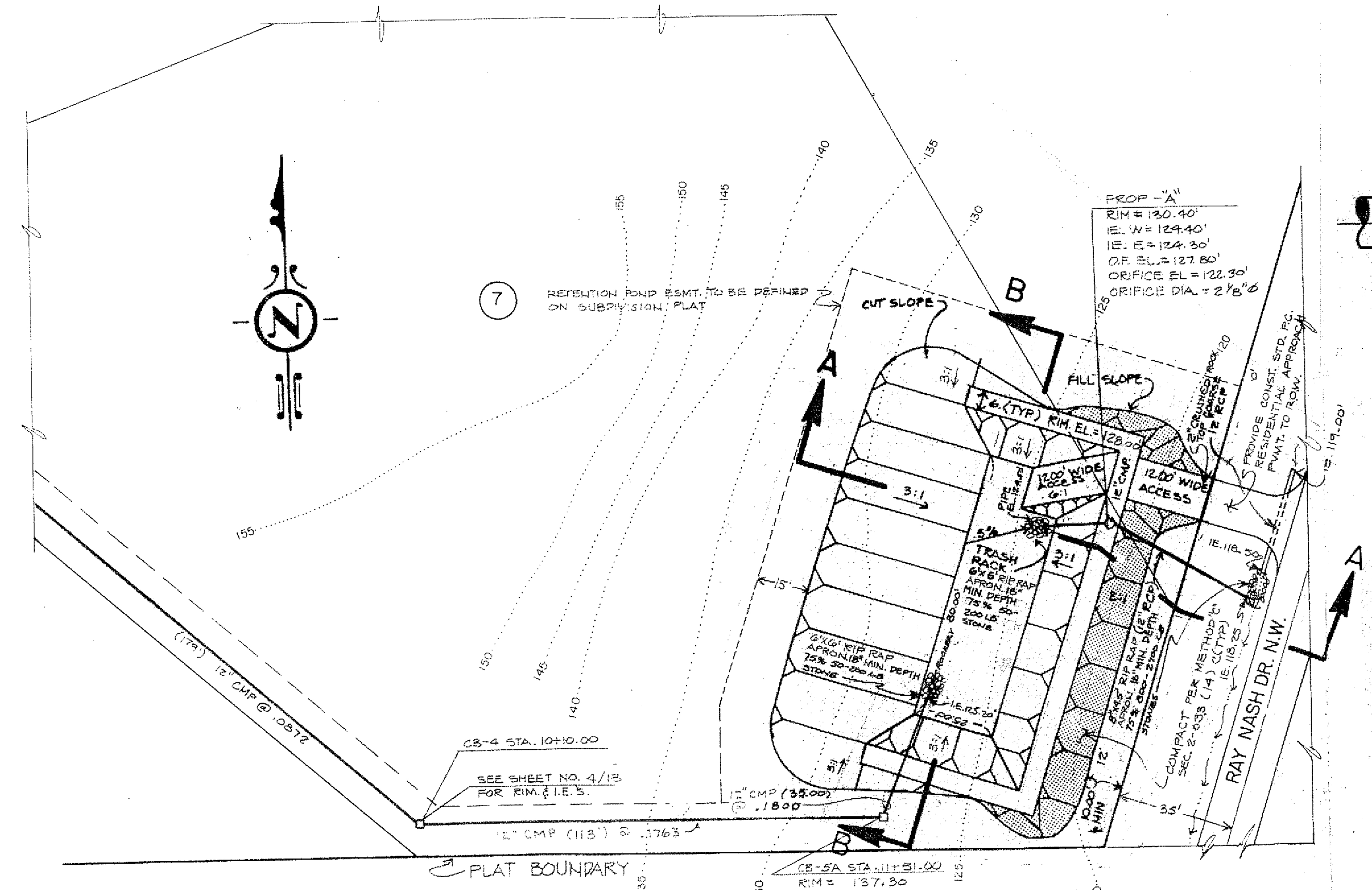
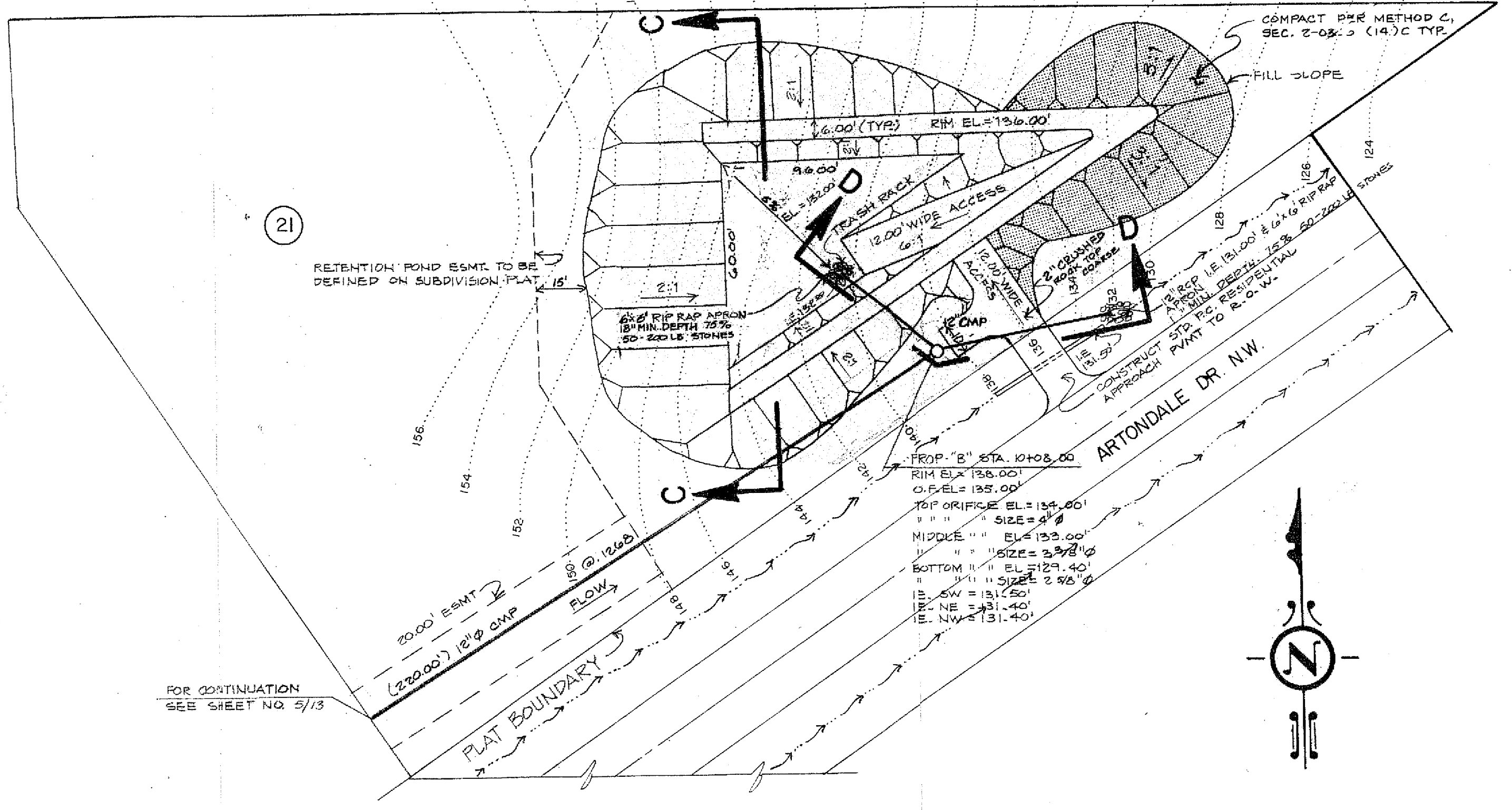


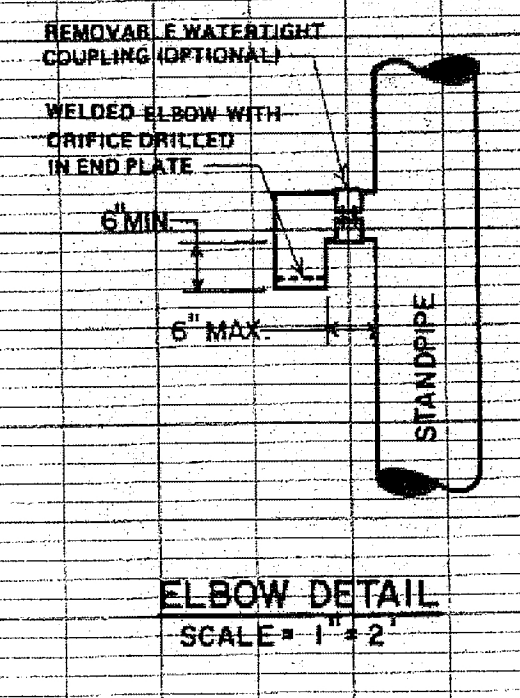
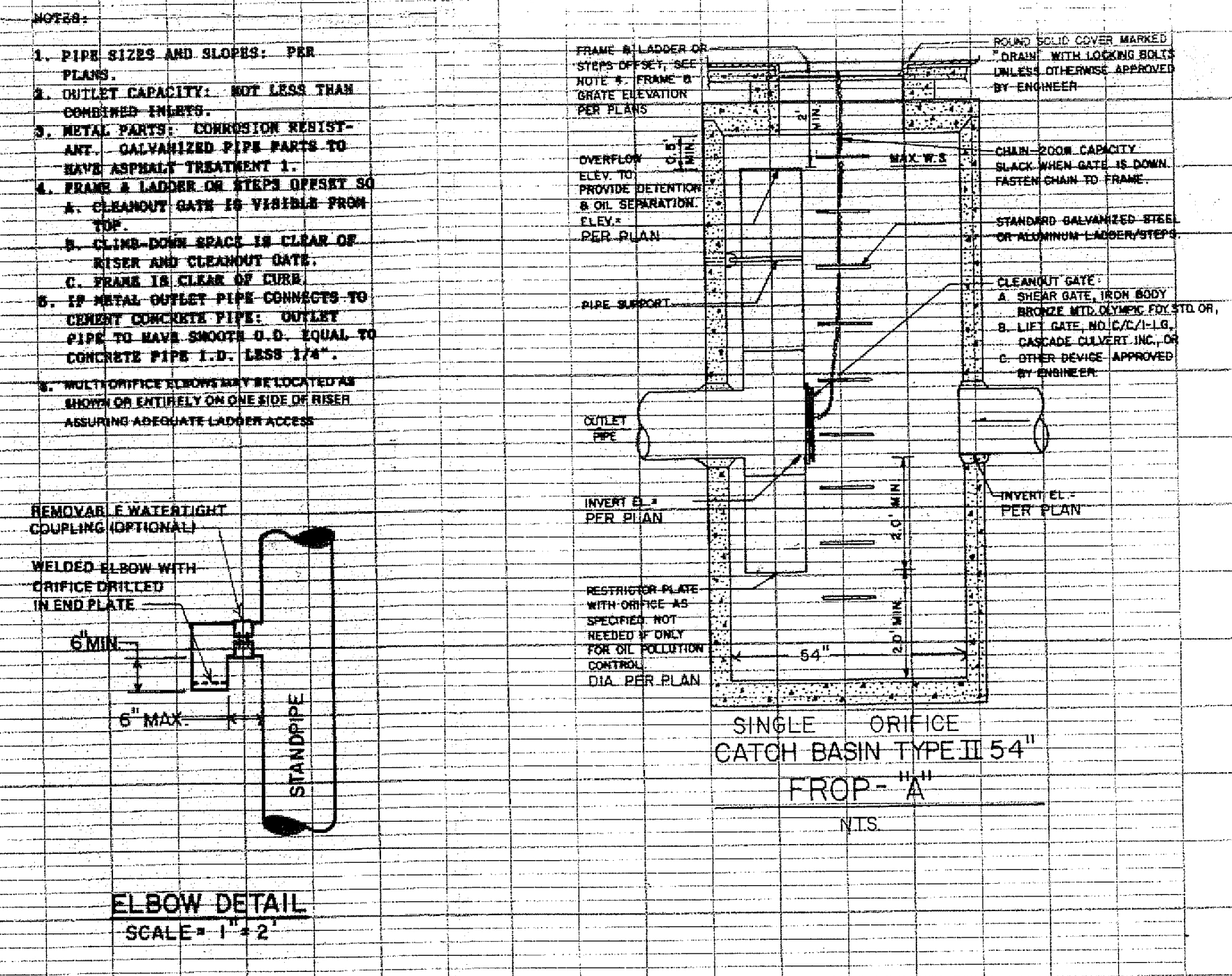
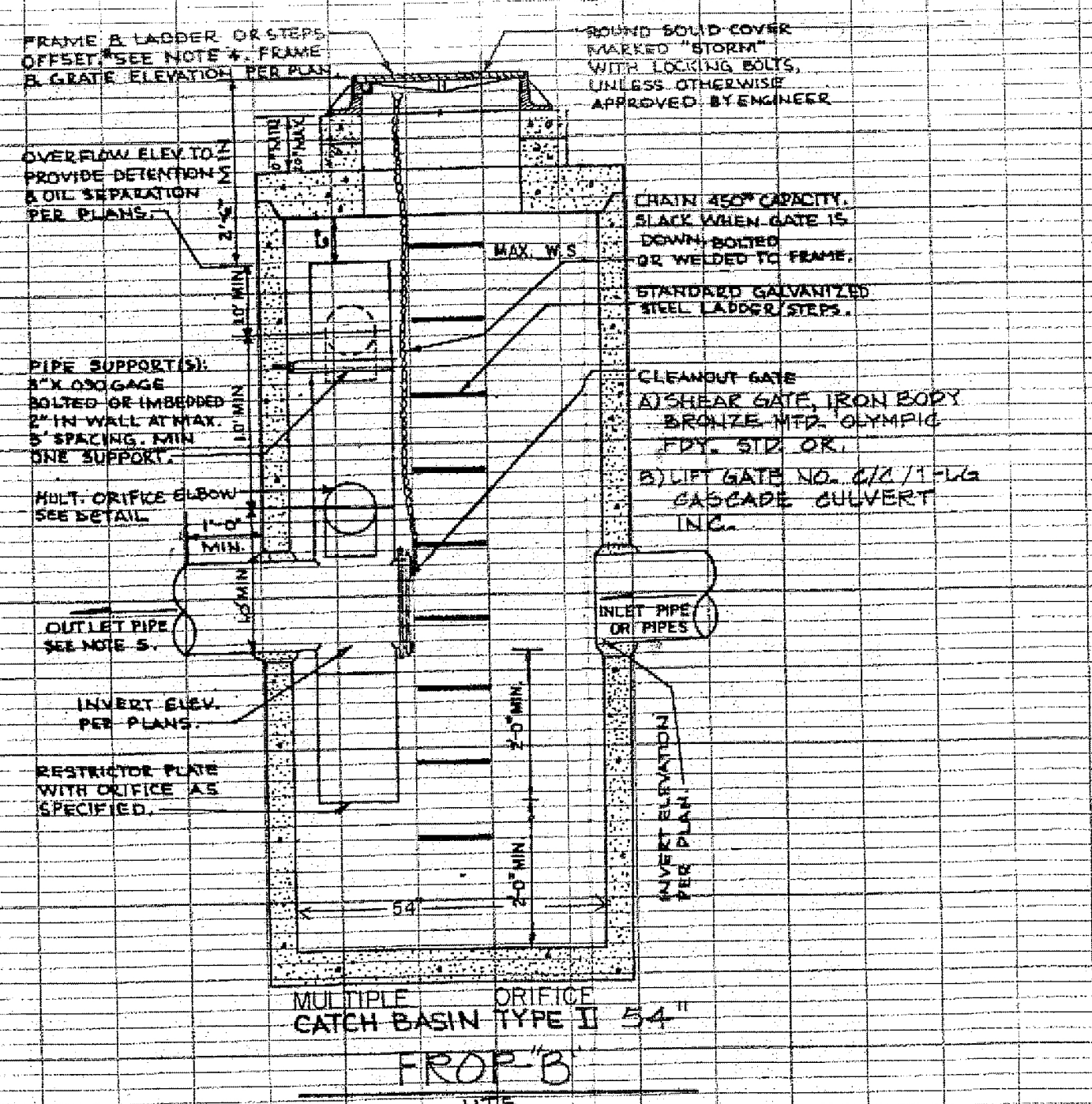
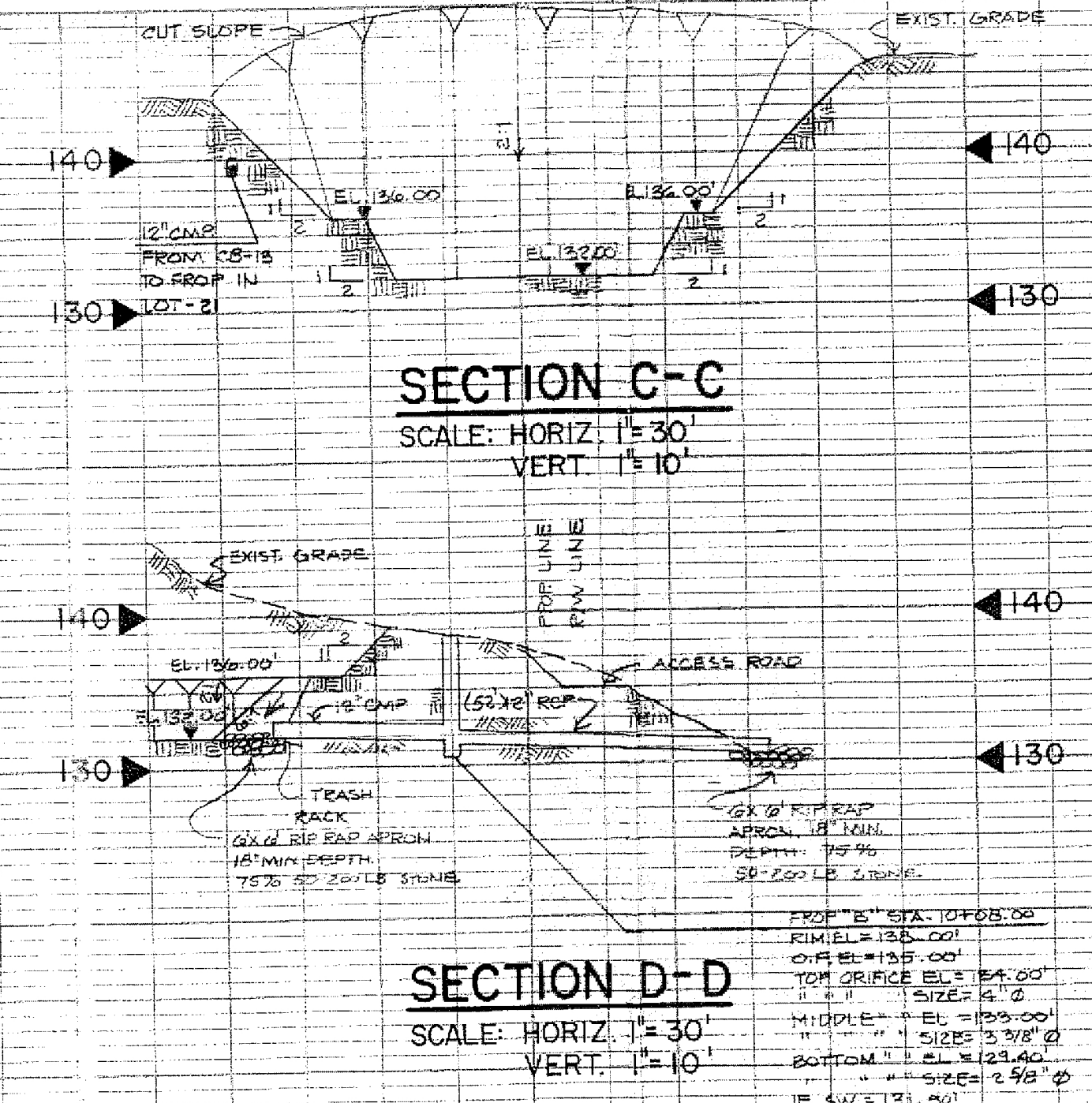
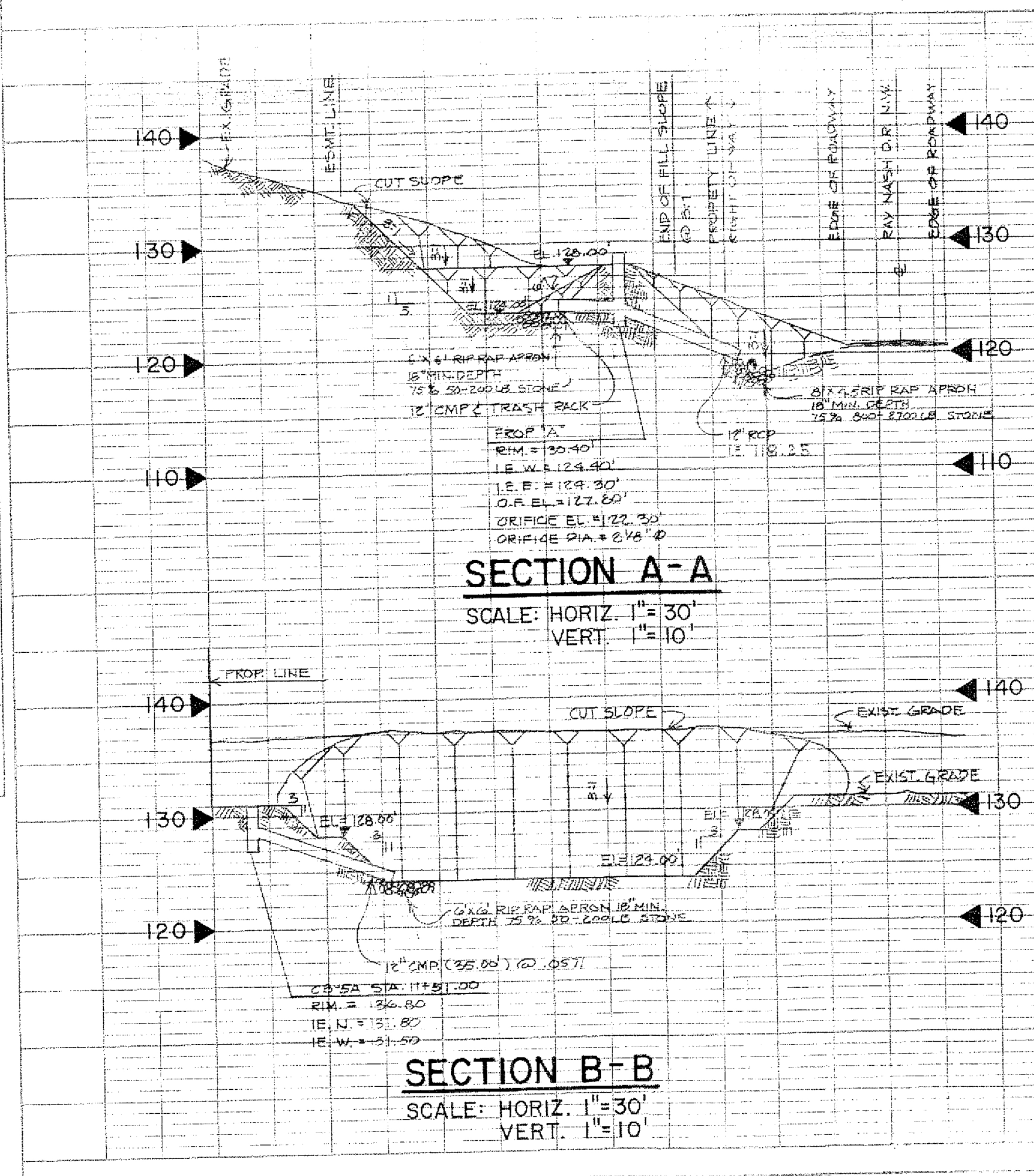
DATE	
BY	
REVISION	
APPROVED	
NOTED	
BY	
DATE	



MULT. FLOW RESTRICTOR/OIL POLLUTION CONTROL DEVICE, TEE TYPE. (FROP-T)



DATE	
BY	
REVISION	
APPROVED	
NOTED	
BY	
DATE	



<p><b>SPROUT ENGINEERS, INC.</b> FACTORIA EAST SUITE 101 • 12826 S.E. 40TH LANE BELLEVUE, WA 98006 • TELEPHONE (206) 841-5810</p>	<p>EUGENE C. SPROUT RE &amp; LE 9890</p>	<p>KOPACHUCK RIDGE ESTATES DIVISION NO 3 RETENTION PONDS AND DETAILS</p>		SHEET
		<p>ENGINEERS SERVICE CORPORATION ONE DEWART BLVD. 3RD FLOOR BELLEVUE, WA 98004 (206) 841-5820</p>		3
<p>JOB NO. 10003 DRAWN: [Signature] CHECKED: [Signature] DATE: 5/15/87</p>		<p>REVISIONS 1. PERCE CO. REVIEW 5/15/87 2. PERCE CO. REVIEW 5/15/87 3. PERCE CO. REVIEW 5/15/87 4. PERCE CO. REVIEW 5/15/87</p>		OF
<p>PLATE 1 - PLAN - PROFILE - F.A.S. NO. 20001-1 CLEARING PLAN CO. SPOKANE, WA</p>		<p>PERCE CO. REVIEW 7/17/87 10. " " " " 7/18/87 11. " " " " 7/24/87</p>		3