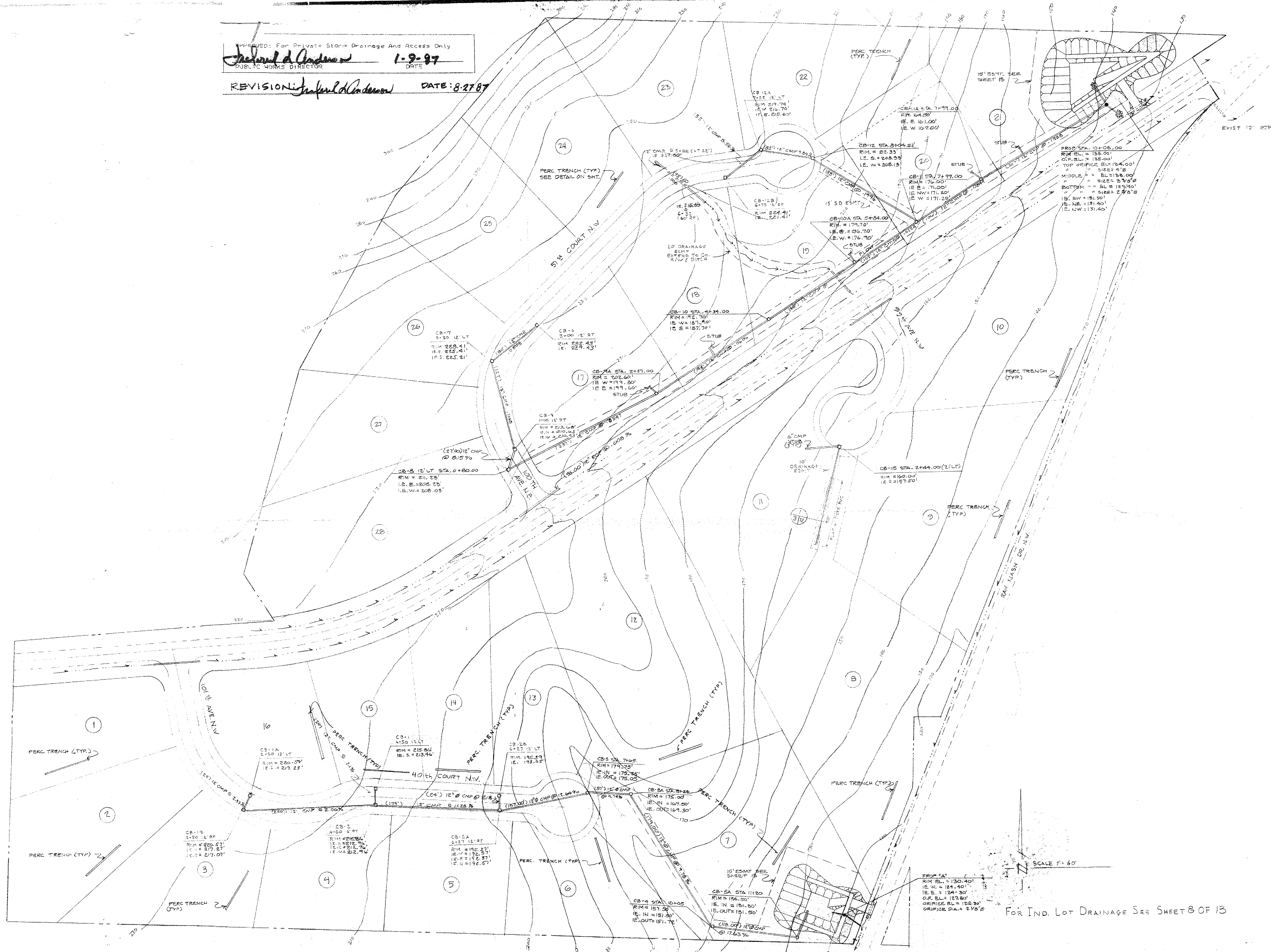


APPROVED: For Private Storm Drainage And Access Only
Frederick D. Anderson 1-9-87
 PUBLIC WORKS DIRECTOR DATE

REVISION: *Frederick D. Anderson* DATE: 8-27-87



SCALE 1" = 60'
 FOR IND. LOT DRAINAGE SEE SHEET 8 OF 13

SHEET 2 OF 13	
KOPACHUCK RIDGE ESTATES DIVISION NO 9 CITIZENS SERVICE CORPORATION ONE NEWPORT DRIVE BELLEVUE SE SUITE 214, BELLEVUE, WA 98006 (206) 644-5100	
Storm Drainage Plan	
JOB NO.	5005
DRAWN	J.C.
CHECKED	J.C.
DATE	11-22-83
ENGINEER	SPROUT ENGINEERS, INC.
REGISTERED	REGISTERED PROFESSIONAL ENGINEER
NO.	12628
CLASS.	S.E.
EXPIRES	12-31-86
ISSUED	11-22-83
REVISED	11-22-83
DATE	11-22-83
"FACTORIA EAST" SUITE 101 • 12628 S.E. 40th LANE BELLEVUE, WA 98006 • TELEPHONE (206) 641-8810	