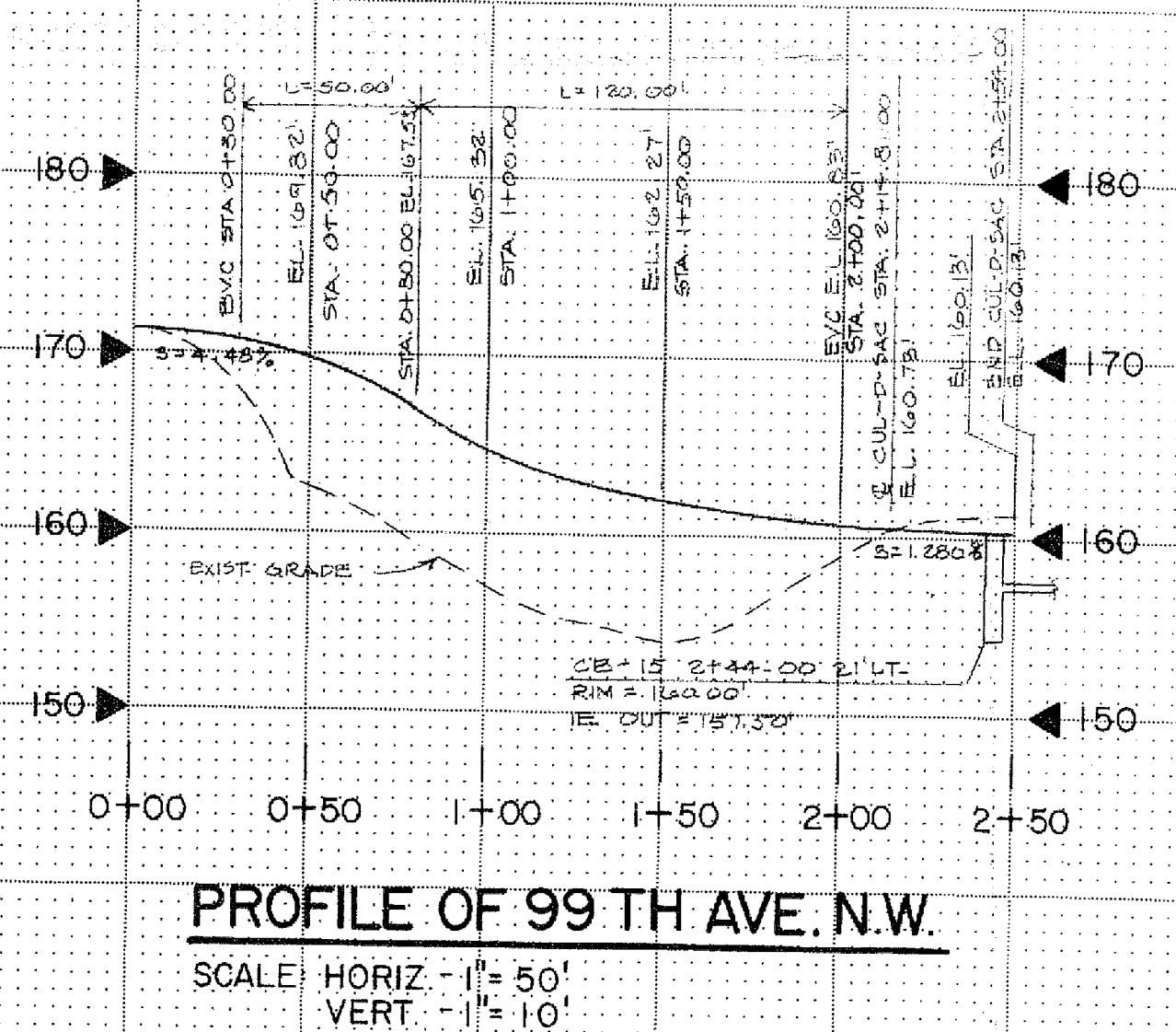
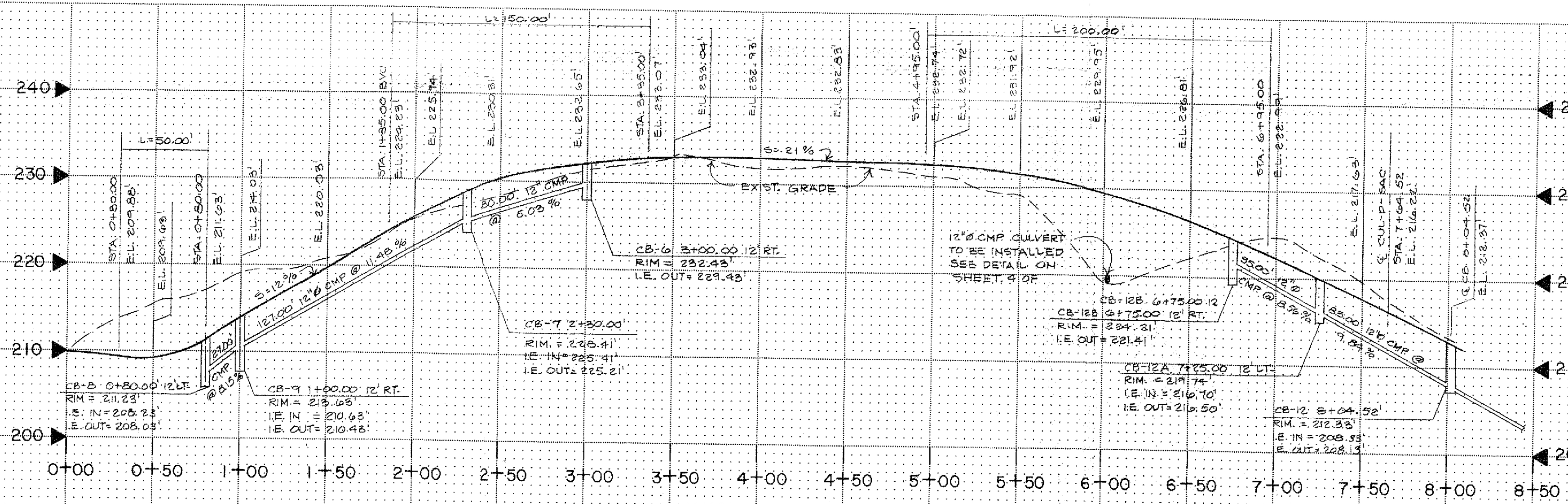
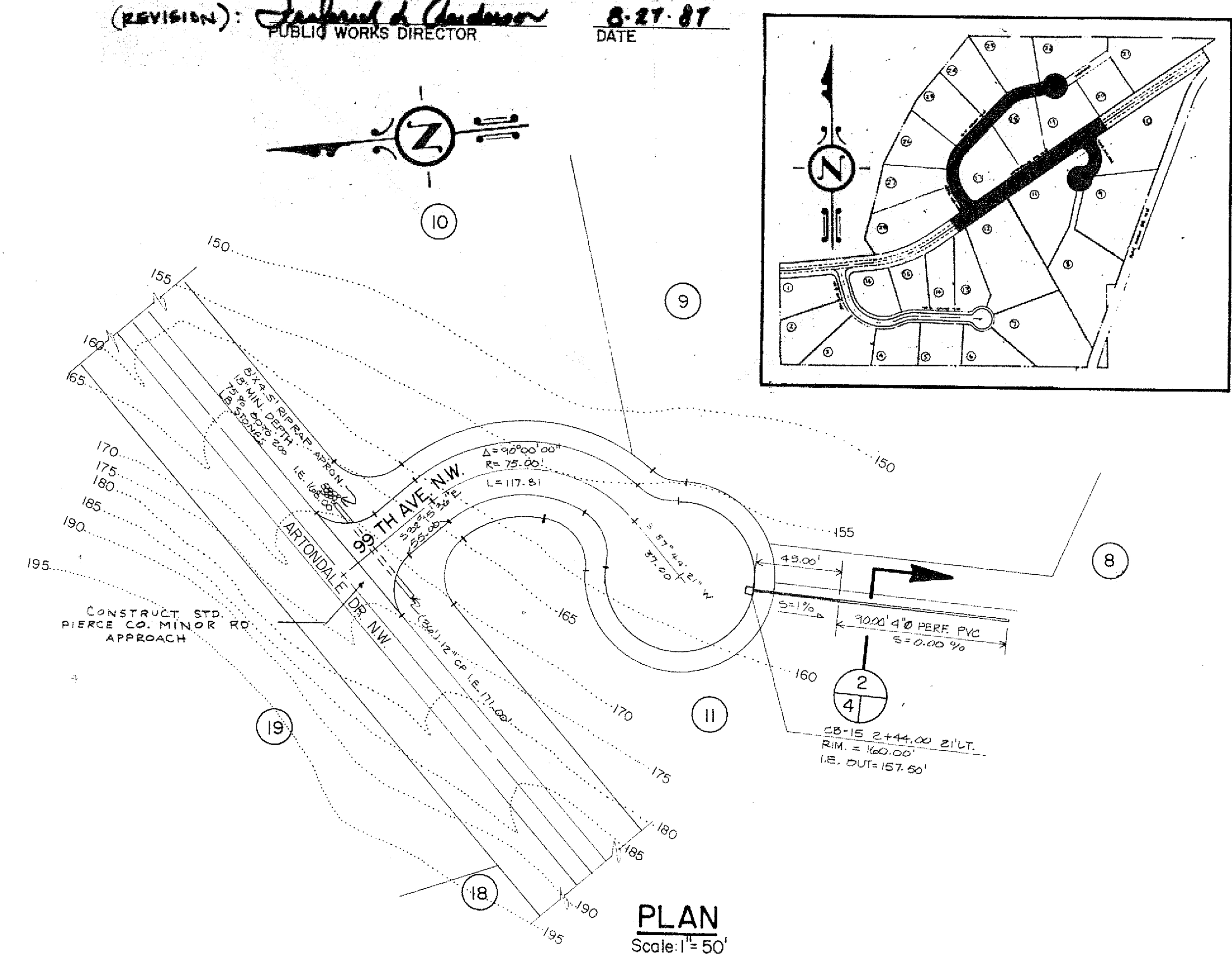
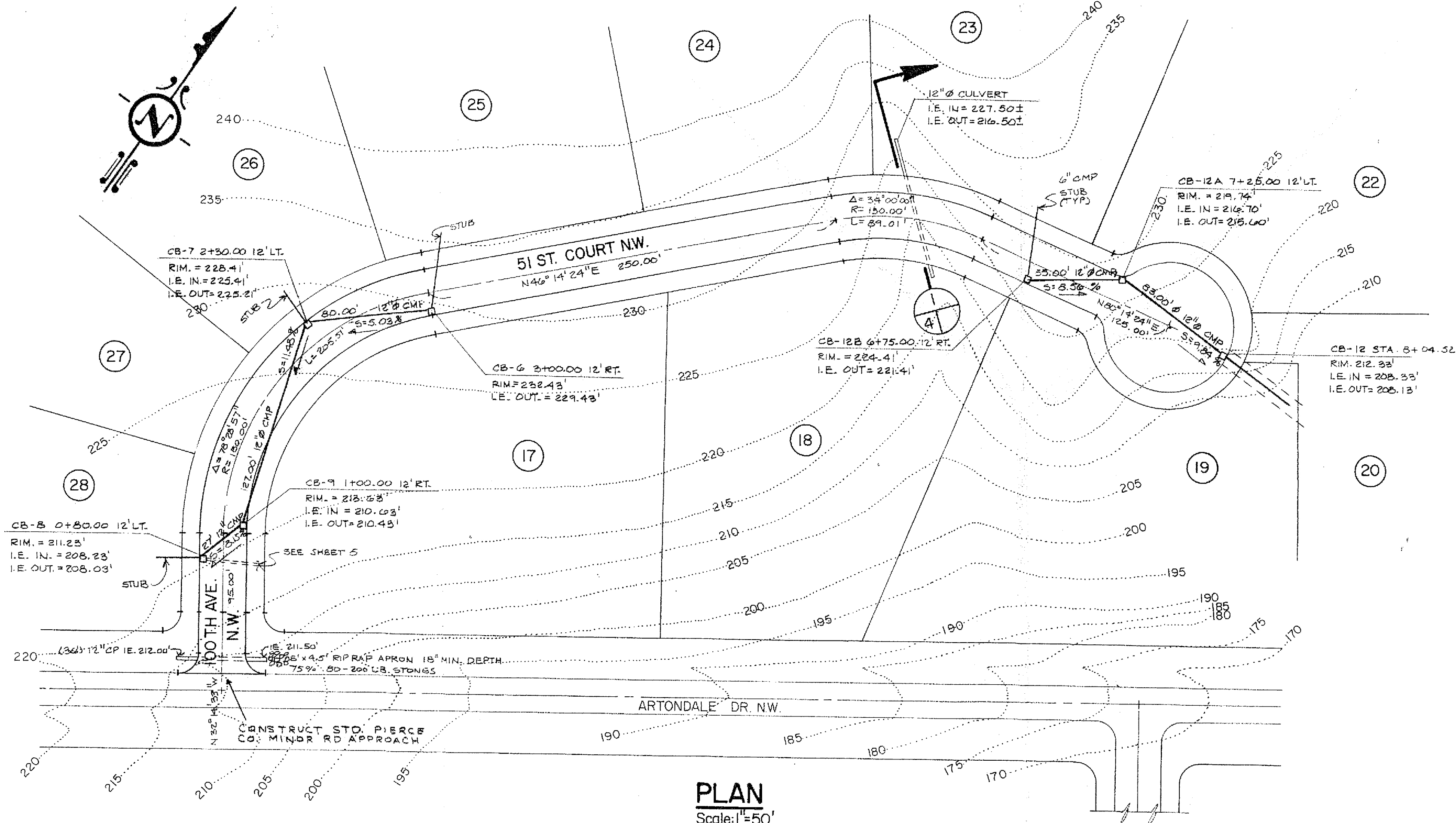


APPROVED FOR PRIVATE STORM SYSTEM AND ACCESS ONLY  
 (REVISION): *James H. Anderson* PUBLIC WORKS DIRECTOR DATE: 8-27-87

DATE	
BY	
REVISION	
NO. OF WAY CHECKED	
NO. OF WAY CHECKED	
NO. OF WAY CHECKED	

DATE	
BY	
REVISION	
NO. OF WAY CHECKED	
NO. OF WAY CHECKED	
NO. OF WAY CHECKED	



FACTORIA EAST, SUITE 101  
BELLEVUE, WA. 98006

EUGENE C. SPROUT  
RE & LS 9690

**KOPACHUCK RIDGE ESTATES NO. 3**  
PLAN & PROFILE OF 100TH AVE. N.W. & 99TH AVE. N.W.

JOB NO.	7008 (6008)
DRAWN	KJV/DLS
CHECKED	ECS
DATE	4/78

SHEET 3 OF 13

REVISIONS	1. PIERCE CO. REVIEW 8/20/86	5. PIERCE CO. REVIEW 12/30/86
	2. 9/23/86 B.M. ADJUST REVIEW 5/12/87	
	3. 11/7/86 " " " " " " " "	
	4. 1/22/86 " " " " " " " "	
	6. PIERCE CO. REVIEW 7/7/87	