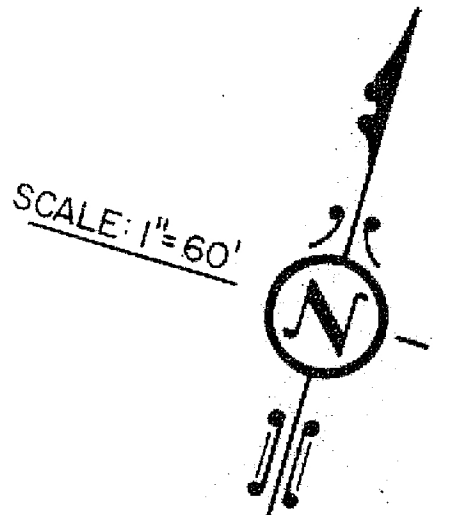


PROP STA. 10+05.00
RIM EL = 155.00'
O/F EL = 155.00'
TOP ORIFICE EL = 154.00'
" " " " SIZES 4"
MIDDLE " " EL = 153.00'
" " " " SIZES 3 3/8"
BOTTOM " " EL = 129.40'
" " " " SIZES 2 1/8"
E SW = 131.50'
E NE = 131.40'
E NW = 131.40'



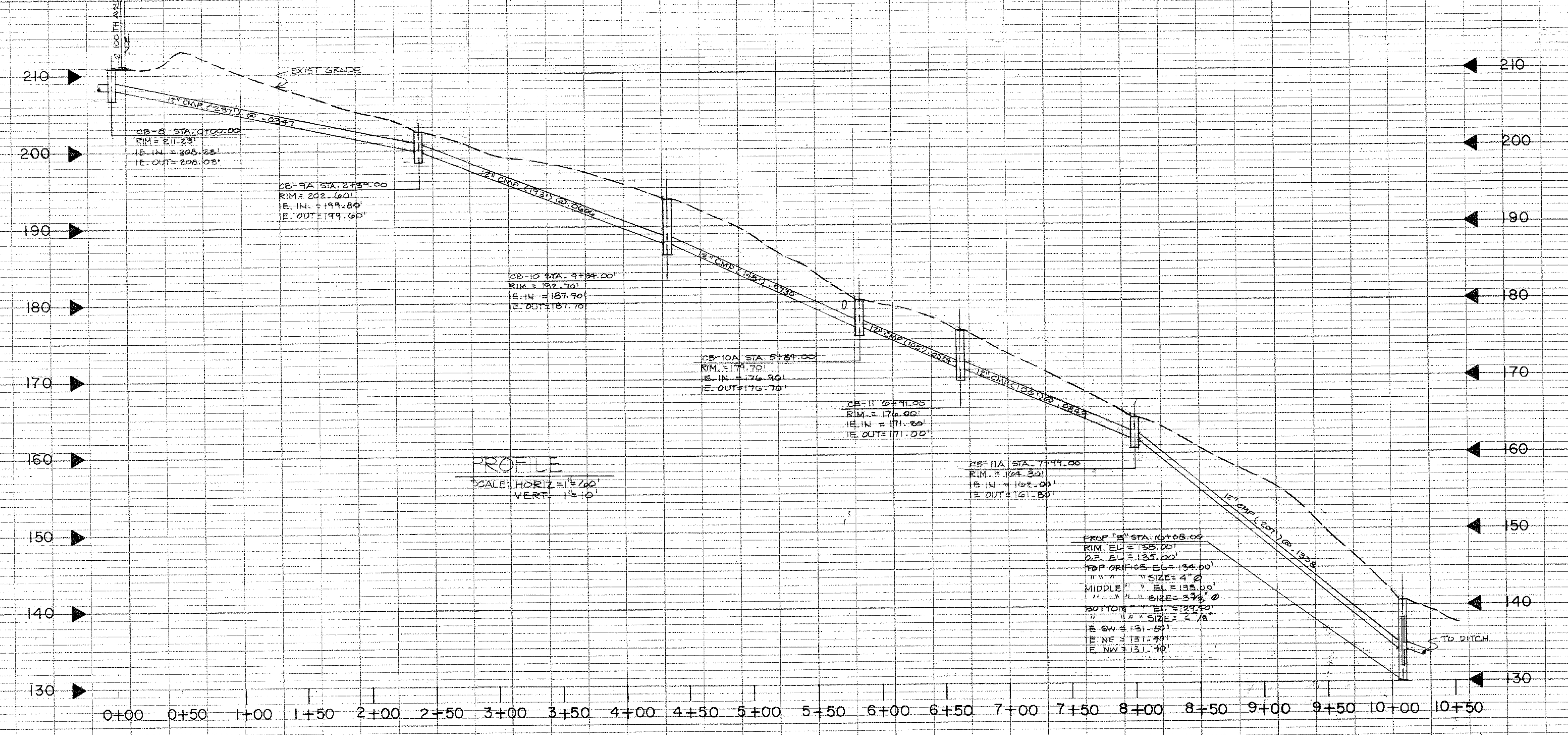
PLAN

NO.	DATE	REVISION

APPROVED FOR PRIVATE STORM SYSTEM AND ACCESS ONLY
(REVISION) *Michael Anderson* PUBLIC WORKS DIRECTOR
DATE 8-27-87

PROFILE

NO.	DATE	REVISION



SHEET 5 OF 13	
KOPFACHUCK RIDGE ESTATES DIVISION NO. 5 STORM DRAINAGE ARTONDALE DR. N.W.	
CITIZEN SERVICE CORPORATION 2000 NORTH BROADWAY, SUITE 214 BELLINGHAM, WA 98220	REVISIONS: REVISE W/ 6/2/87 CHECKED: M. W. [Signature]

SPROUT ENGINEERS, INC. PACIFIC EAST - SUITE 101 18265 S.E. 40th LANE BELLEVUE, WA 98006 TELEPHONE (206) 641-4810	ENGINEER'S SIGNATURE: <i>Michael Anderson</i> DATE: 8/27/87
------------------------------------------------------------------------------------------------------------------------------	----------------------------------------------------------------