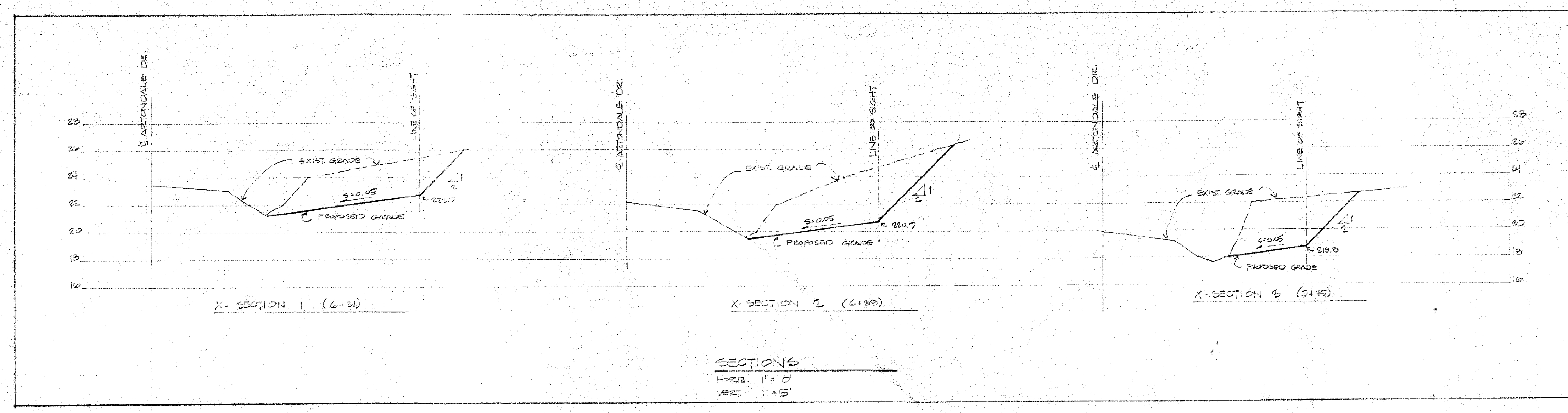
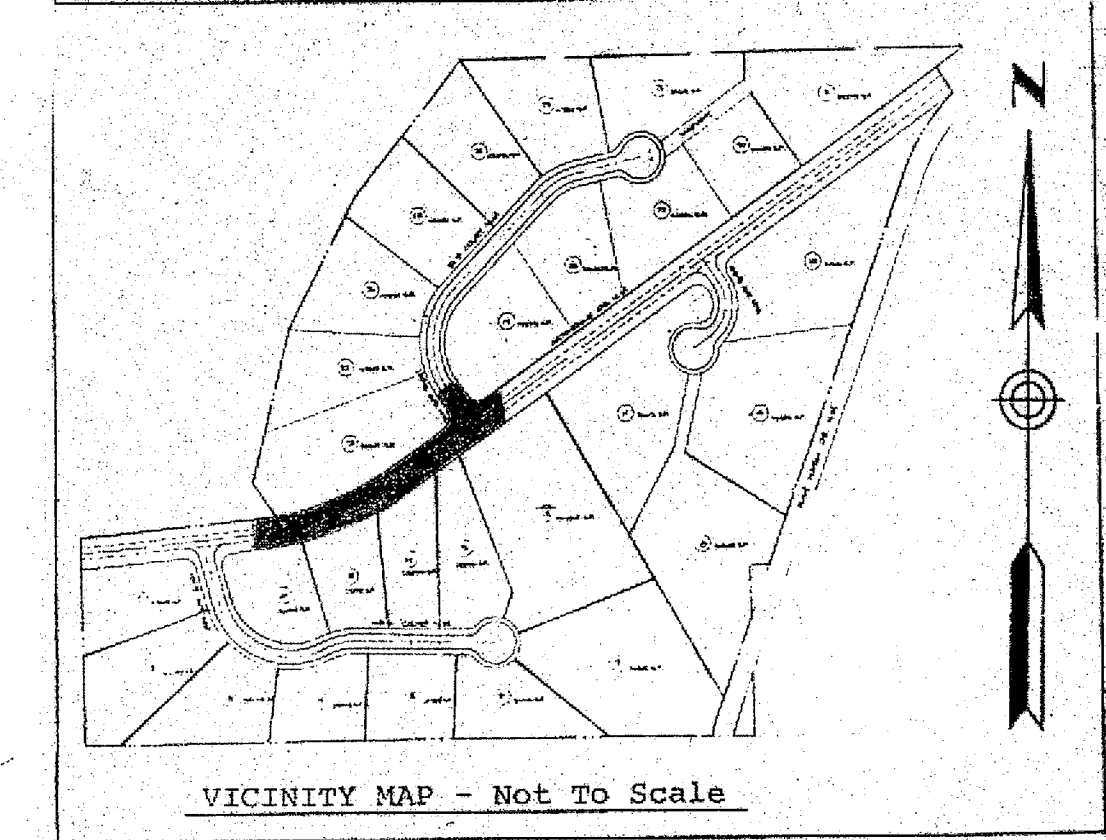
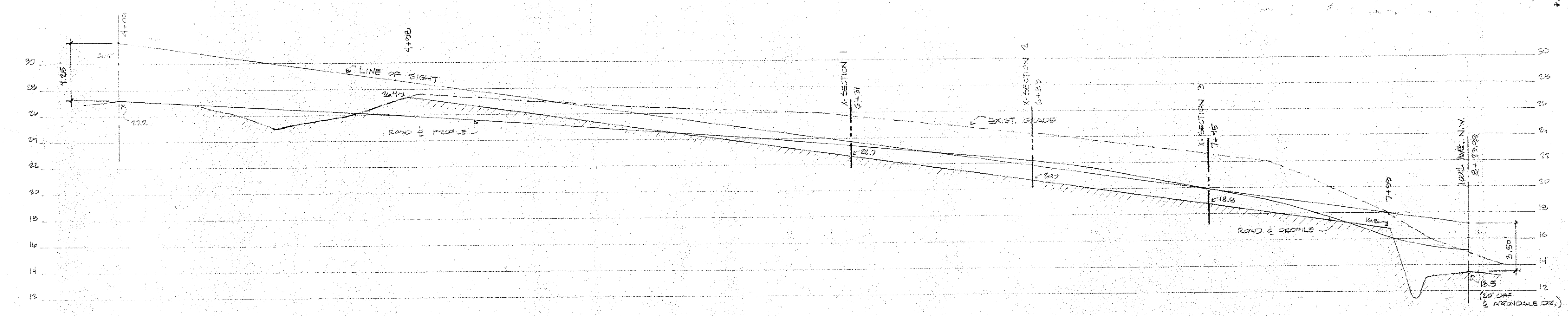
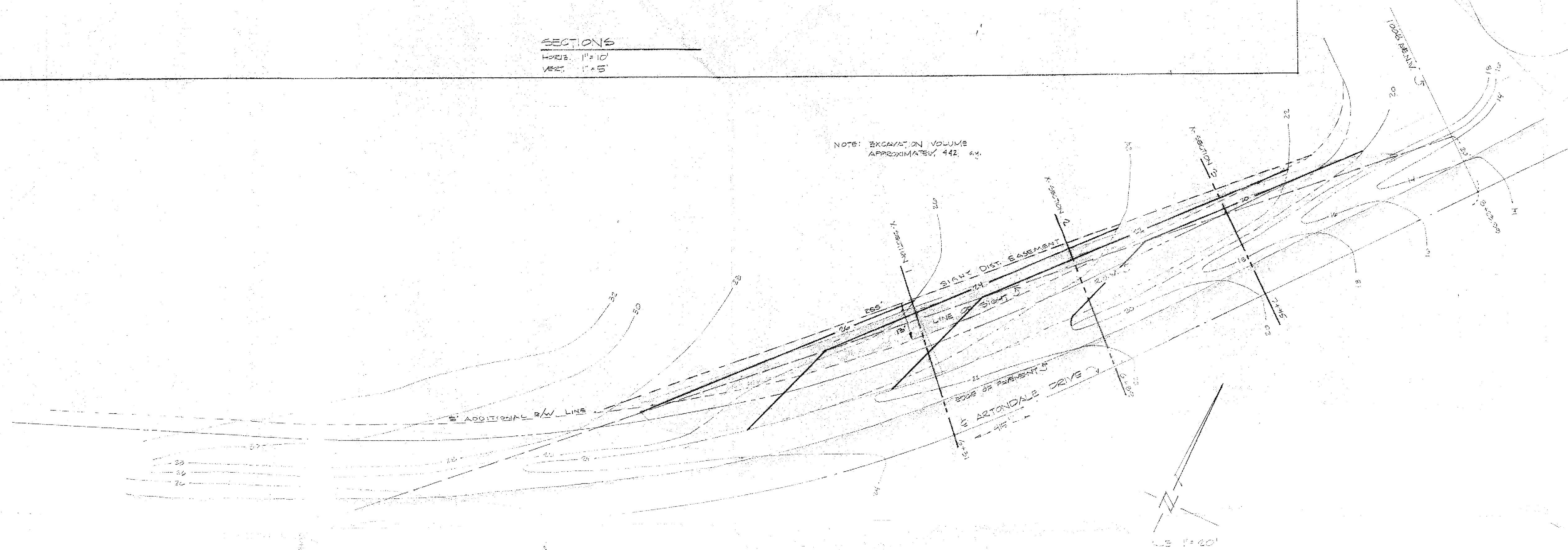


APPROVED FOR PRIVATE STORM DRAINAGE & ACCESS ONLY  
**Jeffrey A. Amann** 1-9-87  
 PUBLIC WORKS DIRECTOR

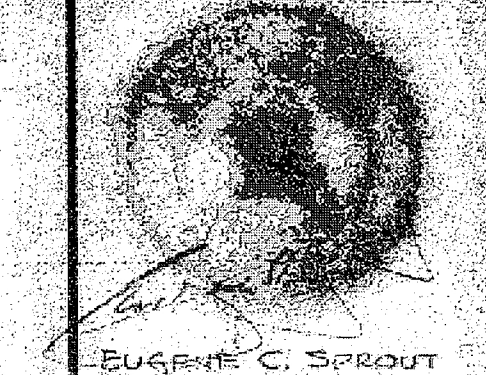


NOTE: EXCAVATION VOLUME APPROXIMATELY 442 CY.



PROFILE & LINE OF SIGHT  
 VERT. 1" = 5'  
 HORIZ. 1" = 20'

**SPROUT ENGINEERS, INC.**  
 "FACTORY EAST" SUITE 101 • 12828 S.E. 40th LANE  
 BELLEVUE, WA 98006 • TELEPHONE (206) 841-5810



KOPACHUCK RIDGE ESTATES DIVISION NO. 3		
CITIZENS SERVICE CORPORATION ONE NEW PORT 8035 130th AVE. SE SUITE 214, BELLEVUE, WA 98006 (206) 644-8100		
ARTONDALE DR. & 1006th AVE. NW ROAD APPROACH / SITE DISTANCE STUDY		
JOB NO.	80081	ISSUED FOR PERMIT
DESIGN	12	4-12-86 & PROBLEMS - CORRECTING
CHECKED	822	7-18-86
DATE	4-12-86	5-20-86 - PIECE COR. REVISION 8/20/86

SHEET  
 6  
 OF  
 13