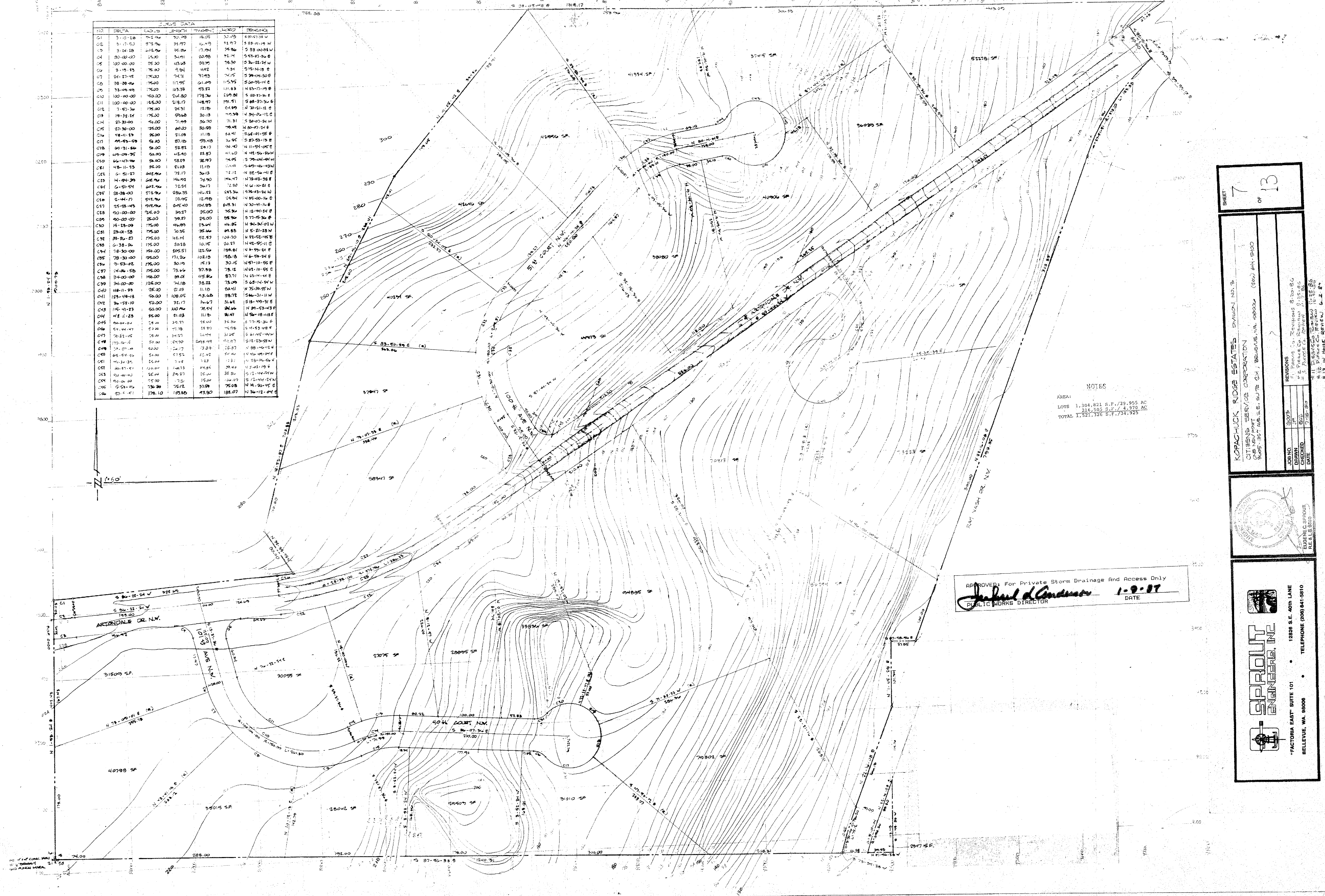


NO	DELTA	COORD	LENGTH	ANGLE	COORD	BEARING
C01	3.00-10	41.00	30.00	15.00	30.00	S 89.07-18 W
C02	3.17-50	37.97	31.97	11.97	31.97	S 88.01-19 W
C03	3.14-28	35.84	17.94	35.84	S 89.04-18 W	
C04	30.00-00	15.00	30.00	90.00	S 89.07-18 E	
C05	3.18-15	35.80	31.80	11.80	S 88.02-19 W	
C06	30.13-45	17.43	30.13	17.43	S 89.04-18 E	
C07	30.28-00	15.00	30.28	90.00	S 89.07-18 E	
C08	33.44-48	15.00	33.44	15.00	S 88.02-19 E	
C09	100.00-00	150.00	100.00	90.00	S 89.07-18 E	
C10	100.00-00	150.00	100.00	90.00	S 89.07-18 E	
C11	100.00-00	150.00	100.00	90.00	S 89.07-18 E	
C12	7.57-36	175.00	24.31	175.00	N 70.01-12 E	
C13	19.32-14	175.00	24.31	175.00	N 70.01-12 E	
C14	27.30-00	175.00	27.30	90.00	S 89.07-18 W	
C15	48.11-13	175.00	27.30	175.00	N 70.01-12 E	
C16	49.43-59	175.00	27.30	175.00	N 70.01-12 E	
C17	60.31-86	175.00	27.30	175.00	N 70.01-12 E	
C18	49.09-35	175.00	27.30	175.00	N 70.01-12 E	
C19	66.47-46	175.00	27.30	175.00	N 70.01-12 E	
C20	48.11-13	175.00	27.30	175.00	N 70.01-12 E	
C21	6.51-27	175.00	27.30	175.00	N 70.01-12 E	
C22	4.94-39	175.00	27.30	175.00	N 70.01-12 E	
C23	6.51-27	175.00	27.30	175.00	N 70.01-12 E	
C24	28.28-00	175.00	28.28	90.00	S 89.07-18 W	
C25	2.44-17	175.00	28.28	175.00	N 70.01-12 E	
C26	25.58-43	175.00	28.28	175.00	N 70.01-12 E	
C27	30.00-00	175.00	30.00	90.00	S 89.07-18 W	
C28	30.00-00	175.00	30.00	90.00	S 89.07-18 W	
C29	15.15-09	175.00	30.00	175.00	N 70.01-12 E	
C30	23.01-59	175.00	30.00	175.00	N 70.01-12 E	
C31	23.01-59	175.00	30.00	175.00	N 70.01-12 E	
C32	23.01-59	175.00	30.00	175.00	N 70.01-12 E	
C33	78.30-00	175.00	78.30	90.00	S 89.07-18 W	
C34	78.30-00	175.00	78.30	90.00	S 89.07-18 W	
C35	78.30-00	175.00	78.30	90.00	S 89.07-18 W	
C36	8.63-02	175.00	30.00	175.00	N 70.01-12 E	
C37	74.06-58	175.00	30.00	175.00	N 70.01-12 E	
C38	34.00-00	175.00	34.00	90.00	S 89.07-18 W	
C39	34.00-00	175.00	34.00	90.00	S 89.07-18 W	
C40	48.11-13	175.00	34.00	175.00	N 70.01-12 E	
C41	23.48-18	175.00	34.00	175.00	N 70.01-12 E	
C42	30.57-10	175.00	34.00	175.00	N 70.01-12 E	
C43	19.41-23	175.00	34.00	175.00	N 70.01-12 E	
C44	4.81-25	175.00	34.00	175.00	N 70.01-12 E	
C45	84.00-00	175.00	34.00	175.00	N 70.01-12 E	
C46	54.44-47	175.00	34.00	175.00	N 70.01-12 E	
C47	28.21-45	175.00	34.00	175.00	N 70.01-12 E	
C48	77.00-00	175.00	34.00	175.00	N 70.01-12 E	
C49	65.54-50	175.00	34.00	175.00	N 70.01-12 E	
C50	40.33-35	175.00	34.00	175.00	N 70.01-12 E	
C51	80.11-11	175.00	34.00	175.00	N 70.01-12 E	
C52	80.11-11	175.00	34.00	175.00	N 70.01-12 E	
C53	80.11-11	175.00	34.00	175.00	N 70.01-12 E	
C54	80.11-11	175.00	34.00	175.00	N 70.01-12 E	
C55	55.54-46	175.00	34.00	175.00	N 70.01-12 E	
C56	27.11-11	175.00	34.00	175.00	N 70.01-12 E	



NOTES
 AREA:
 LOTS 1,304,821 S.F./29,955 AC
 216,305 S.F./4,970 AC
 TOTAL 1,521,326 S.F./34,925

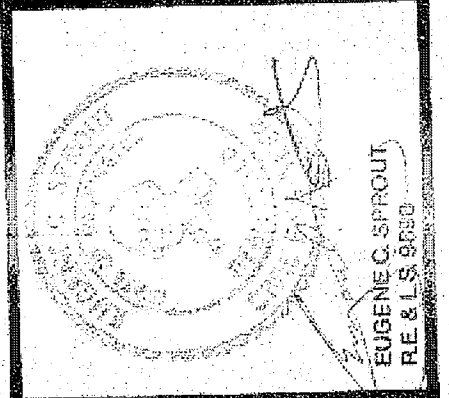
APPROVED: For Private Storm Drainage And Access Only
Julius J. Anderson 1-9-87
 PUBLIC WORKS DIRECTOR DATE

SHEET 7 OF 13

KOPACHUCK RIDGE ESTATES DIVISION NO. 3
 CITIZENS SERVICE CORPORATION
 ONE NEWPORT
 2005-1987 WASH. ST. SUITE 214, BELLEVUE, WA 98008 (206) 844-5800

JOB NO.	8073
DRAWN BY	EG
CHECKED BY	EG
DATE	7-18-85

REVISIONS
 #1 Permit Co. Revisions 8-20-85
 #2 Permit Co. Revisions 9-25-85
 #3 Permit Co. Revisions 10-28-85
 #4 11' Precast Concrete Manhole 10' Dia. 10' High
 #5 12' Precast Concrete Manhole 10' Dia. 10' High
 #6 12' Precast Concrete Manhole 10' Dia. 10' High
 #7 12' Precast Concrete Manhole 10' Dia. 10' High



SPROUT ENGINEERS, INC.
 12826 S.E. 40th Lane
 Bellevue, WA 98006 • TELEPHONE (206) 841-5810