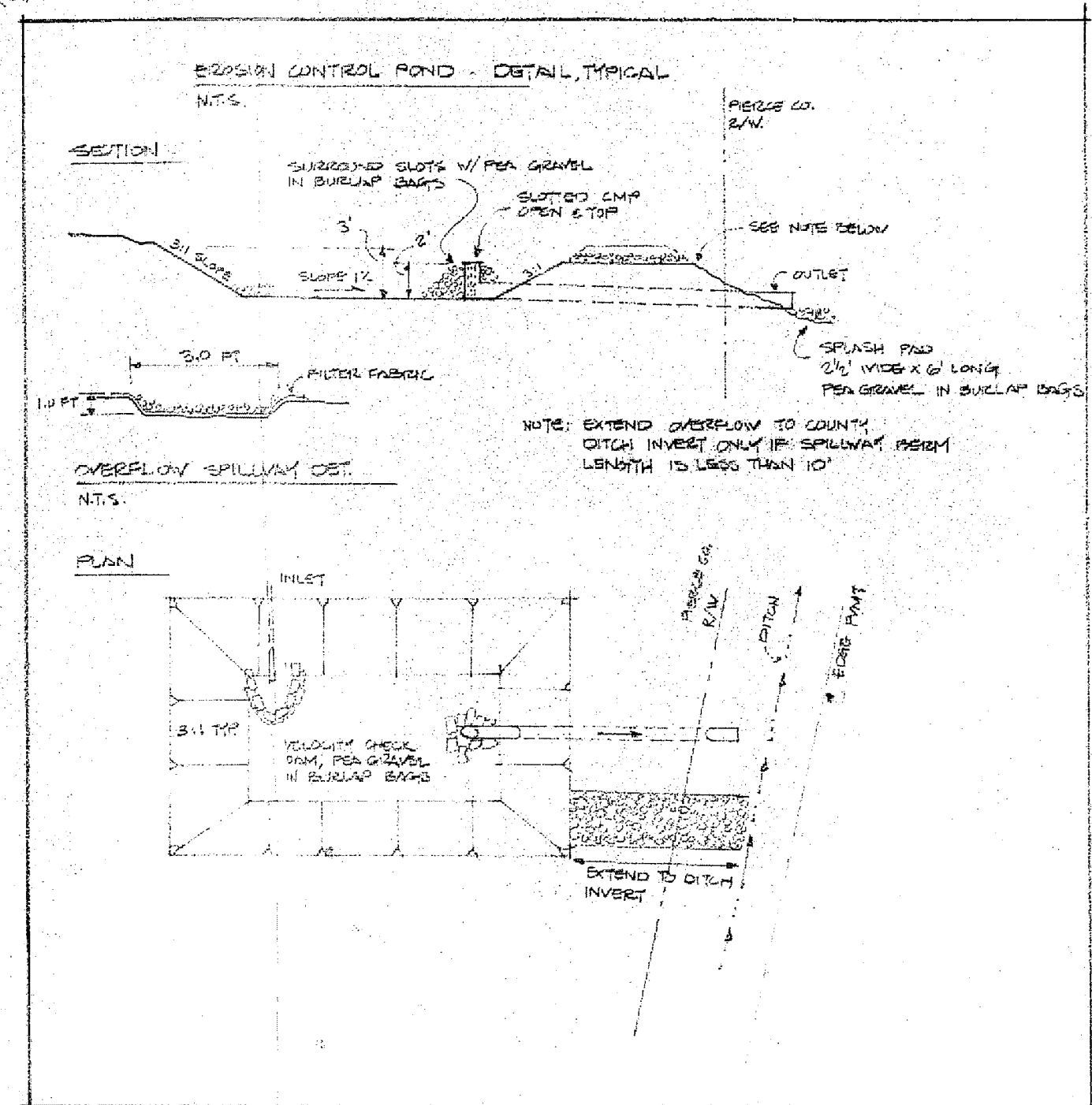
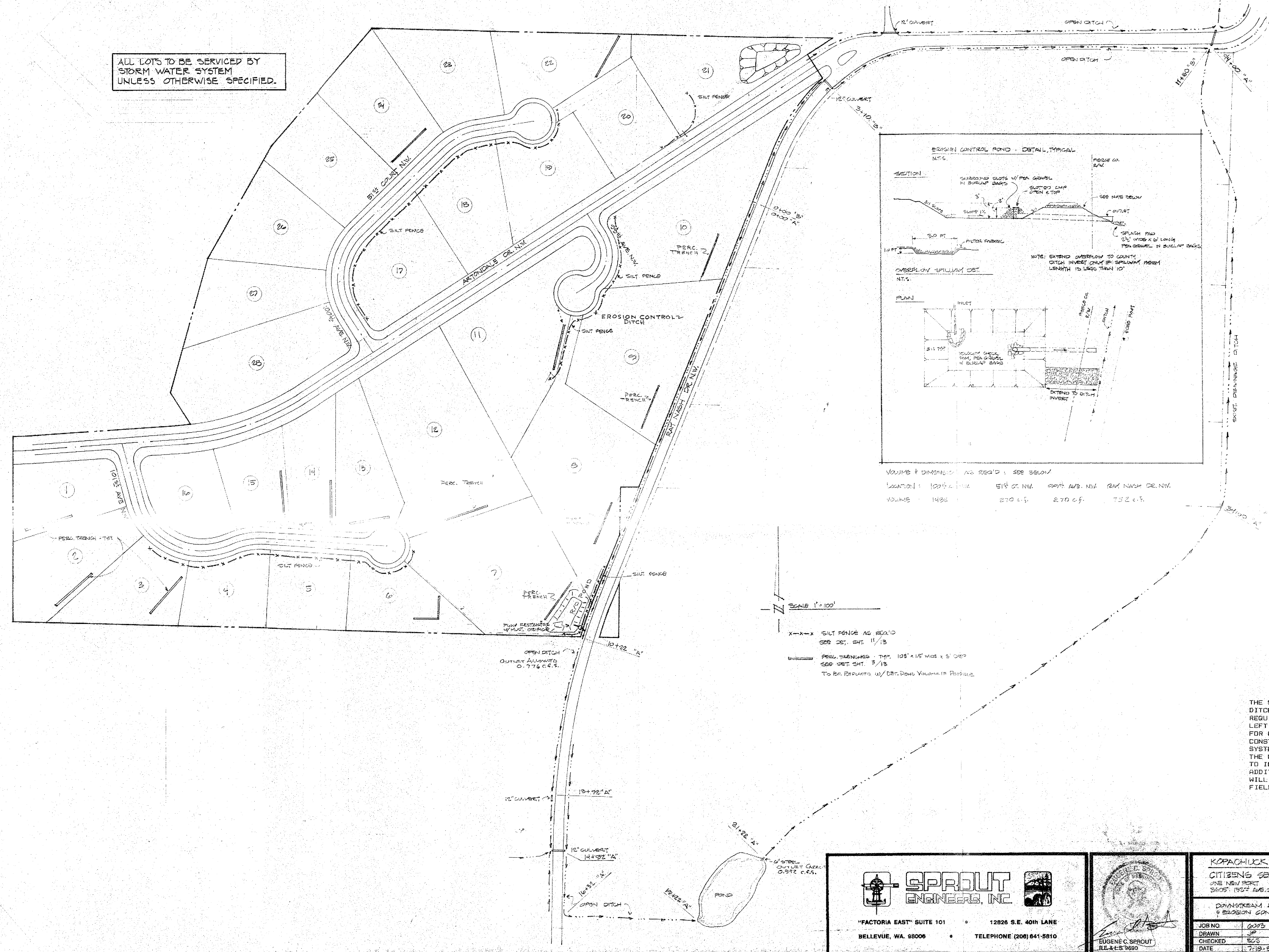


ALL LOTS TO BE SERVICED BY STORM WATER SYSTEM UNLESS OTHERWISE SPECIFIED.



VOLUME & DIMENSIONS AS REQ'D: SEE BELOW
 LOCATION: 1025 AVE NW, END OF NW, 2017 AVE NW, RAIN WASH DR NW
 VOLUME: 1486 c.f., 270 c.f., 270 c.f., 752 c.f.

SCALE 1"=100'

X-X-X SILT FENCE AS REQ'D SEE DET. SHT. 11/13
 PERC. TRENCHES - TYP. 10' x 15' WIDE x 8" DEEP SEE DET. SHT. 3/13
 TO BE REPLACED w/ DRAINAGE VALVE IF POSSIBLE

NOTE

THE SILT FENCES AND EROSION CONTROL DITCHES ARE MINIMUM EROSION CONTROL REQUIREMENTS. THE PROJECT SITE SHALL BE LEFT IN ITS NATURAL CONDITION EXCEPT FOR CLEARING OF ROADS, PONDS AND THE CONSTRUCTION OF THE STORM DRAINAGE SYSTEM. IF THE SITE IS CLEARED BEYOND THE MINIMUM NECESSARY CLEARING REQUIRED TO INSTALL THE IMPROVEMENTS, ADDITIONAL EROSION CONTROL MEASURES WILL BE REQUIRED AND A COMPLETE PLAN OR FIELD ADJUSTMENT WILL BE REQUIRED.

SPROUT ENGINEERS, INC.
 "FACTORIA EAST" SUITE 101 • 12826 S.E. 40TH LANE
 BELLEVUE, WA 98006 • TELEPHONE (206) 841-5810

EUGENE C. SPROUT
 P.E. & S. 9880

KOPACHUCK RIDGE ESTATES DIVISION NO. 3	
CITIZENS SERVICE CORPORATION	
ONE NEW HART 28051 1927 AVE. S.E. SUITE 214, BELLEVUE, WA 98006 (206) 644-5400	
DRAINAGE & EROSION CONTROL PLAN	
JOB NO.	6003
DRAWN	JP
CHECKED	EC
DATE	7/19/06
REVISIONS	
#1	Pierce Co. Revisions 8-20-06
#2	Pierce Co. Revisions 9-15-06
#3	Pierce Co. Review 11-7-06
#4	Pierce Co. Review 11-25-06
#5	Pierce Co. Review 12-10-06
#6	In-house Revisions 12/1/07