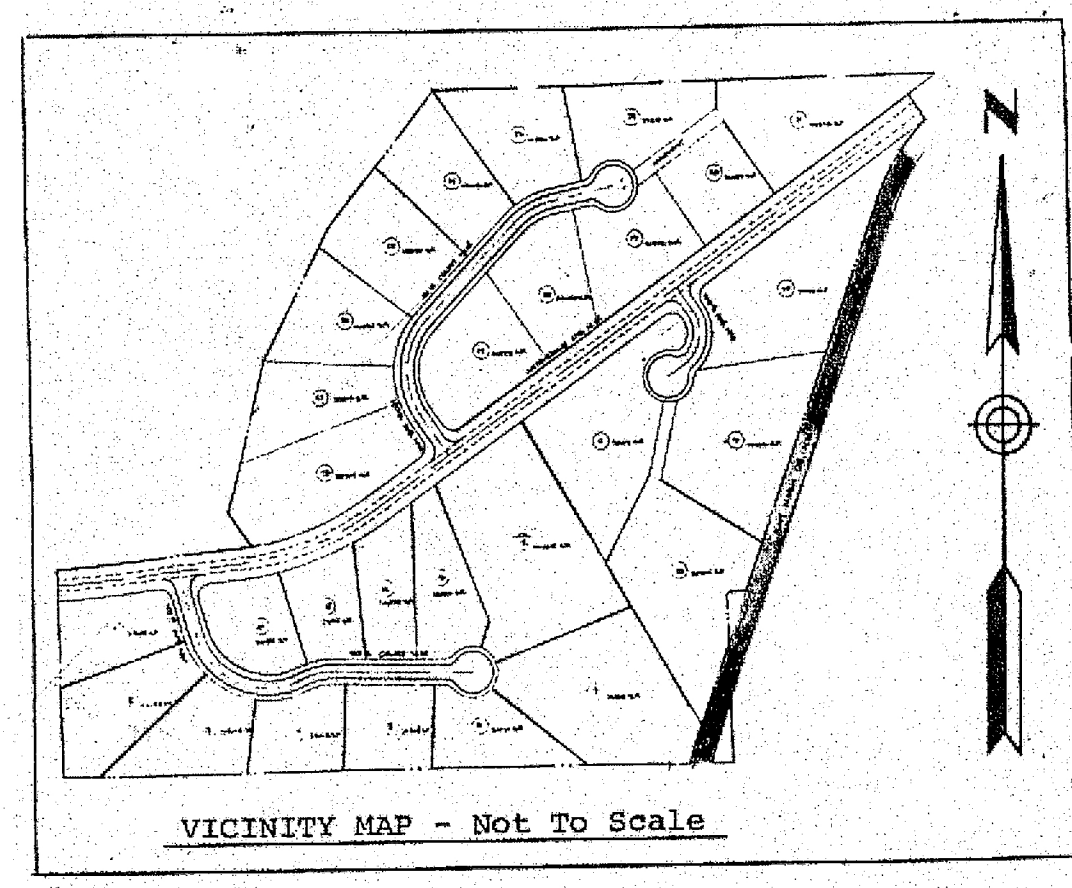
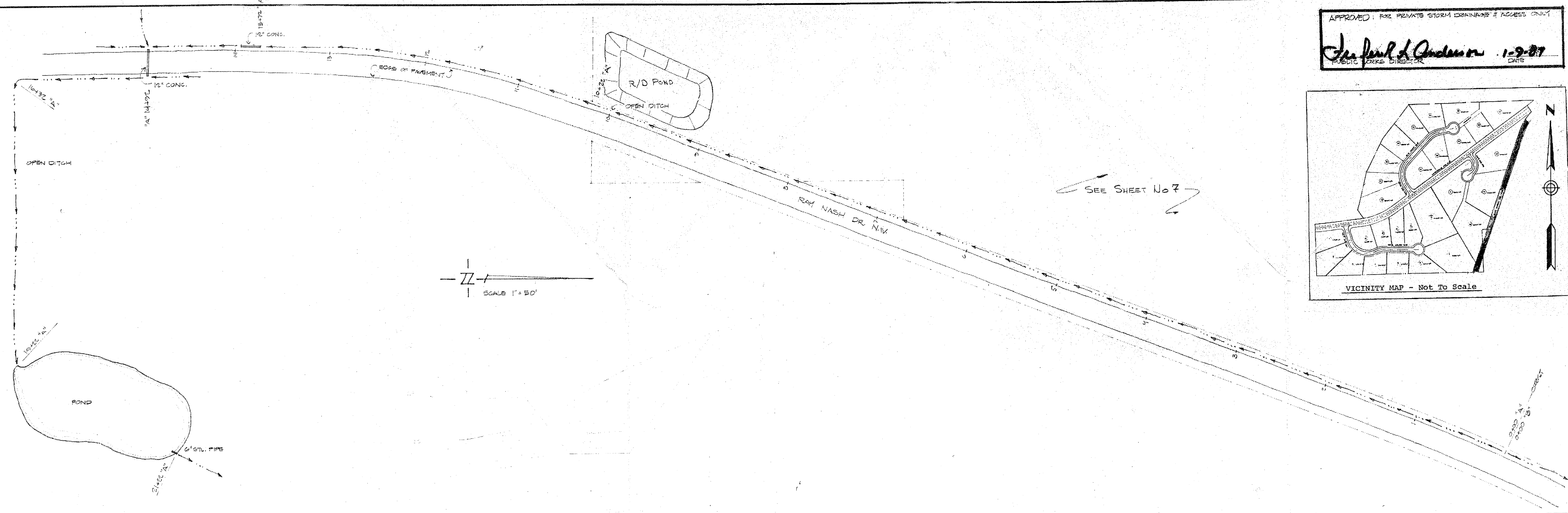


APPROVED FOR PRIVATE STORM DRAINAGE & ACCESS ONLY  
*John Paul Anderson* 1-9-87  
 PUBLIC WORKS DIRECTOR DATE



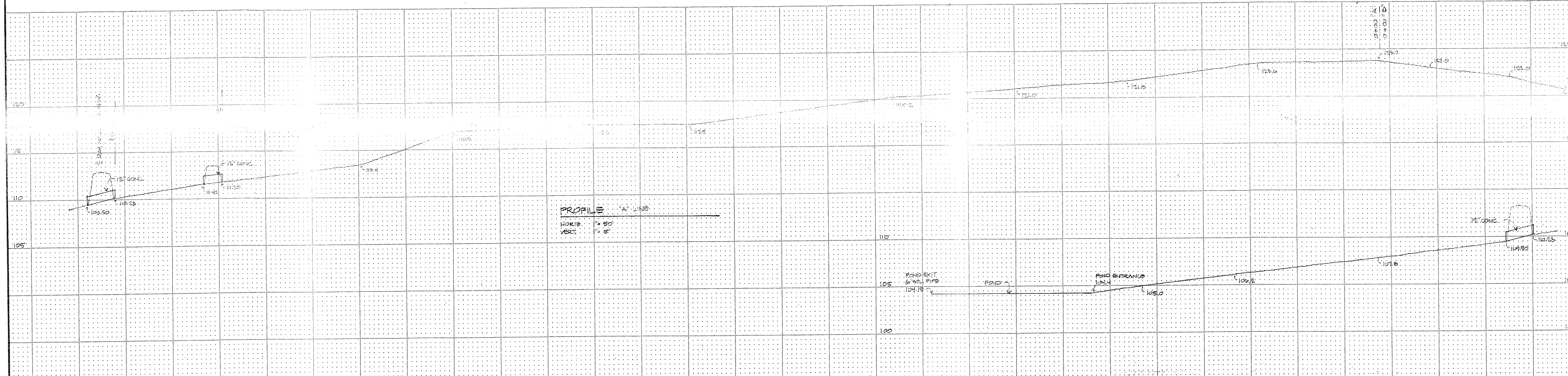
SEE SHEET No 7

SCALE 1" = 50'



DATE  
 BY  
 SURVEYED  
 ALIGNED  
 CHECKED  
 RT. OF WAY CHECKED  
**PLAN**  
 NOTE BOOK No.

DATE  
 BY  
 SURVEYED  
 GRADES CHECKED  
 PLOTTED  
 REVISIONS NOTATIONS CHECKED  
**PROFILE**  
 NOTE BOOK No.



PROFILE "A" LINE  
 HORIZ. 1" = 50'  
 VERT. 1" = 5'

				KOPACHUCK RIDGE ESTATES DIVISION NO. 3 CITIZEN'S SERVICE CORPORATION 3408 156th Ave. SE, Suite 214, Bellevue, WA 98006 (206) 844-5400	SHEET 9 OF 13
"FACTORIA EAST" SUITE 101 BELLEVUE, WA 98006		12828 S.E. 40th LANE TELEPHONE (206) 841-5810		JOB NO. 6003 DRAWN JP CHECKED BJS DATE 7-18-86	REVISIONS #1 PIERCE Co. REVISIONS 8-10-86 #2 PIERCE Co. REVIEW 9-28-86 #3 PIERCE Co. REVIEW 11-7-86 #4 PIERCE Co. REVIEW 11-28-86 #5 PIERCE Co. REVIEW 12-20-86 #6 IN HOUSE 1-2-87 #7 1-26-87