

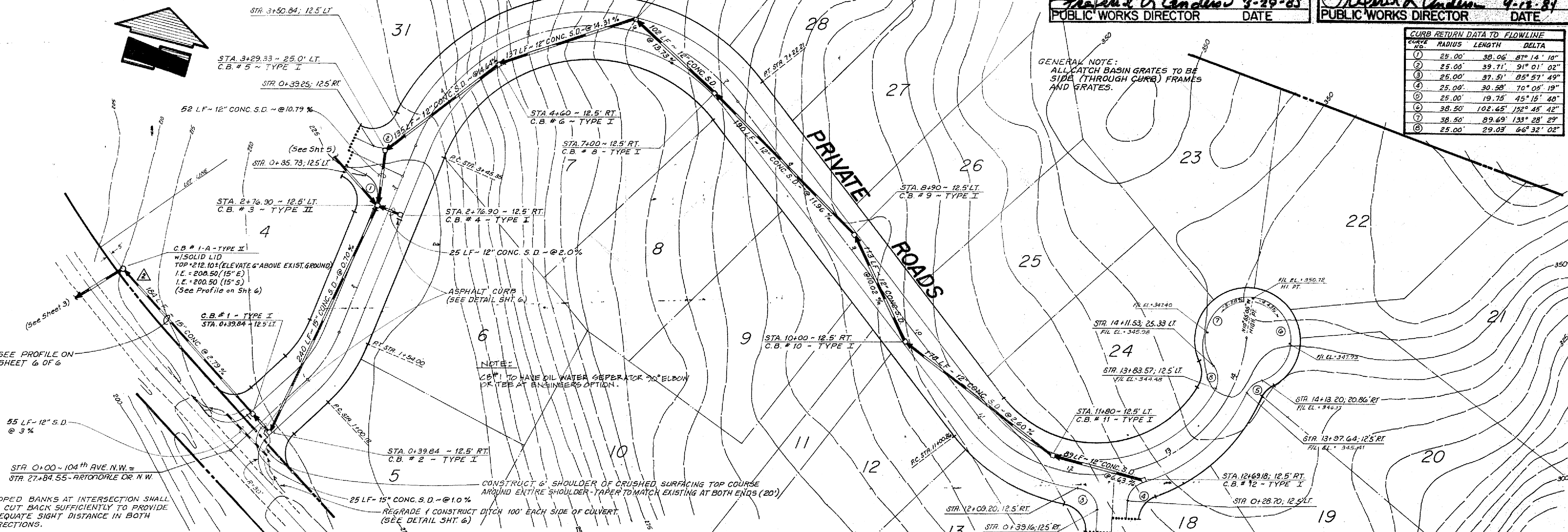
**BUSCH ADDITION (DIVISIONS 1 & 2)**  
 SEC. 15, 16 & 21 TWP 21 N. RGE. 1 E.

APPROVED: FOR REVISED PRIVATE STORM DRAINAGE  
*Frederick D. Anderson* 3-29-85  
 PUBLIC WORKS DIRECTOR DATE

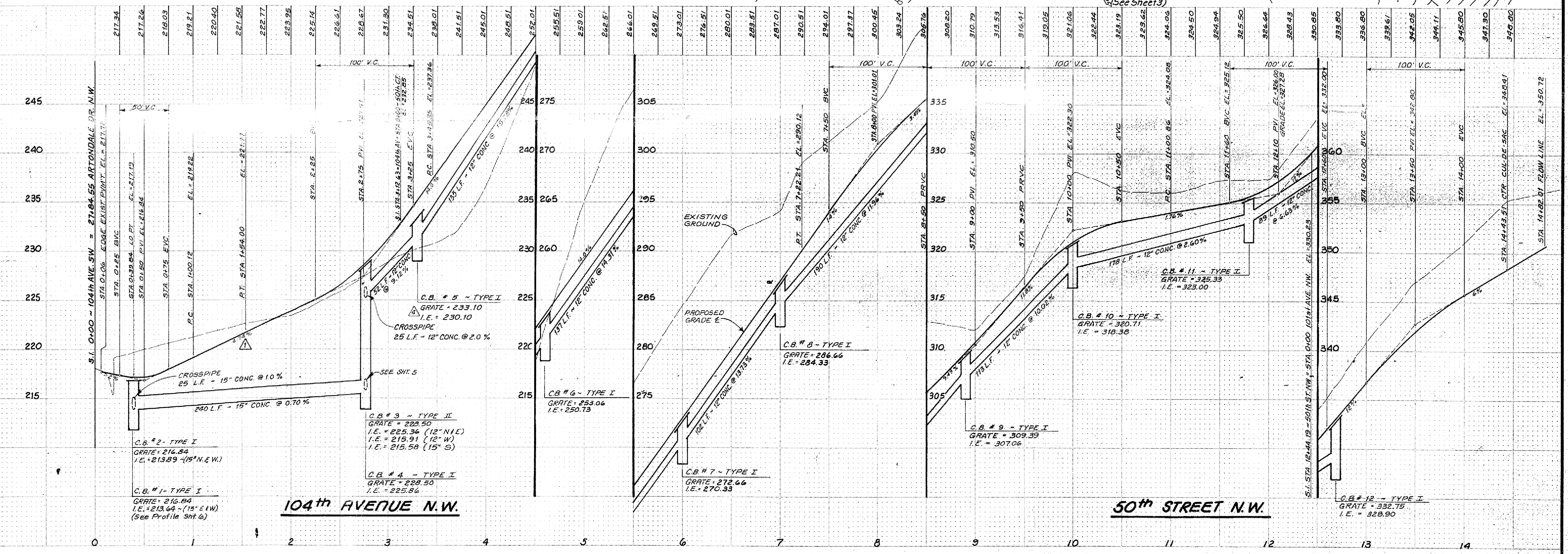
APPROVED: FOR PRIVATE STORM DRAINAGE AND ACCESS ONLY  
*Frederick D. Anderson* 9-22-81  
 PUBLIC WORKS DIRECTOR DATE

CURB	RADIUS	LENGTH	DELTA
1	25.00'	38.06'	87° 14' 10"
2	25.00'	39.71'	91° 01' 02"
3	25.00'	37.51'	85° 57' 49"
4	25.00'	30.58'	70° 05' 19"
5	25.00'	19.75'	45° 15' 40"
6	38.50'	102.45'	132° 45' 42"
7	38.50'	89.69'	133° 28' 29"
8	25.00'	29.03'	66° 32' 02"

GENERAL NOTE:  
 ALL CATCH BASIN GRATES TO BE  
 SIDE (THROUGH CURB) FRAMES  
 AND GRATES.



NOTE: SLOPED BANKS AT INTERSECTION SHALL  
 BE CUT BACK SUFFICIENTLY TO PROVIDE  
 ADEQUATE SIGHT DISTANCE IN BOTH  
 DIRECTIONS.



REVISIONS  
 Revised Grate 1 E. 10-16-84  
 Revised Grate 1 W. 9-20-84  
 Added CB 14 9-20-84  
 Revised Grate and Storm Drain 9-27-84  
 DESIGNED: DATE: 4-84  
 DRAWN: SCALE: H: 1"=50', V: 1"=5'



**BUSCH ADDITION**  
**PAVING & DRAINAGE PLAN & PROFILE**  
**CITIZENS SERVICE CORP.**  
 BOTHELL, WASHINGTON

**STEPAN & ASSOCIATES, Inc.**  
 Engineering, Planning, Surveying  
 590 So. 134th Street, Suite A, Federal Way, Washington 98003  
 Telephone: (206) 778-7801, Telex: 545-4771