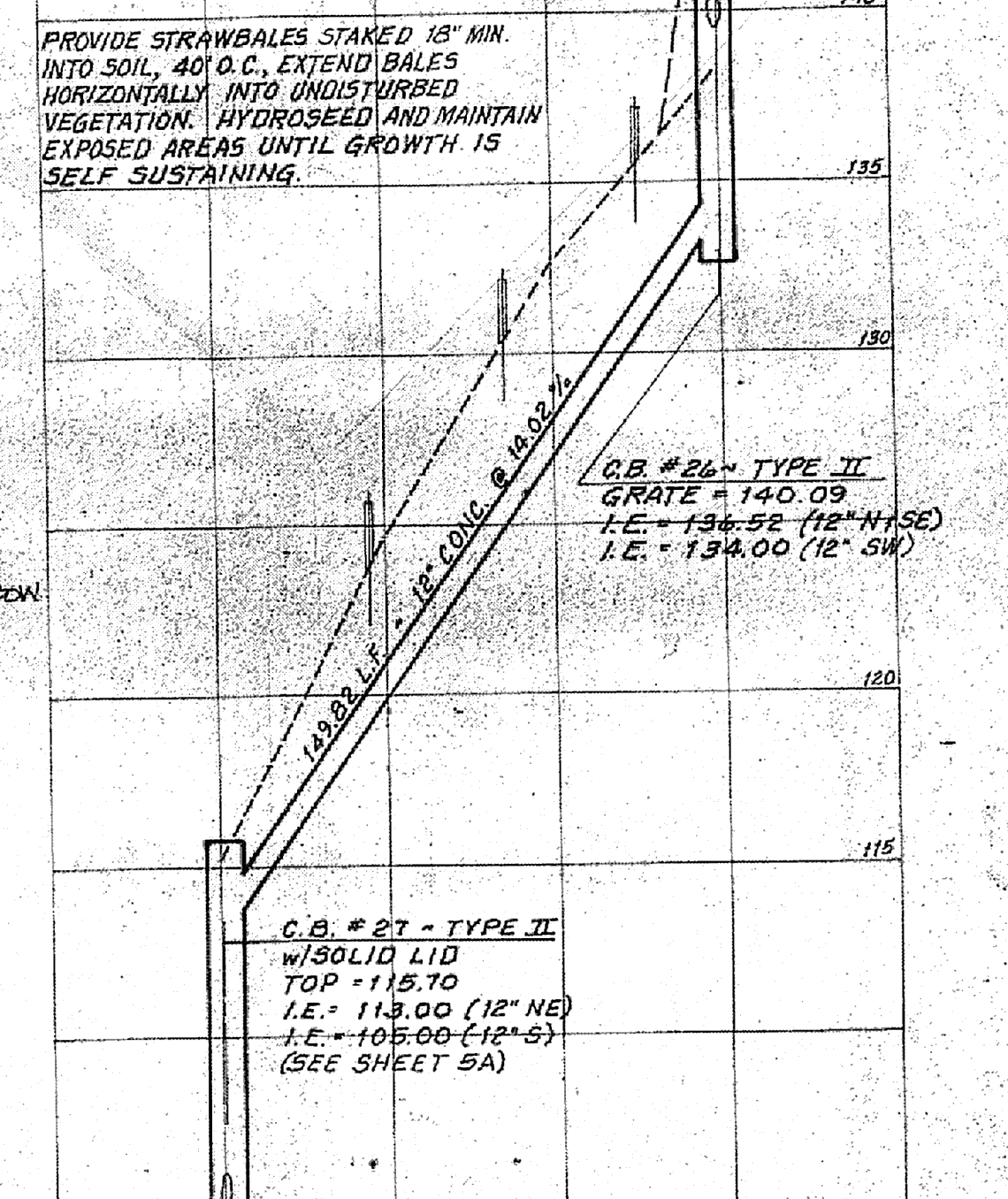
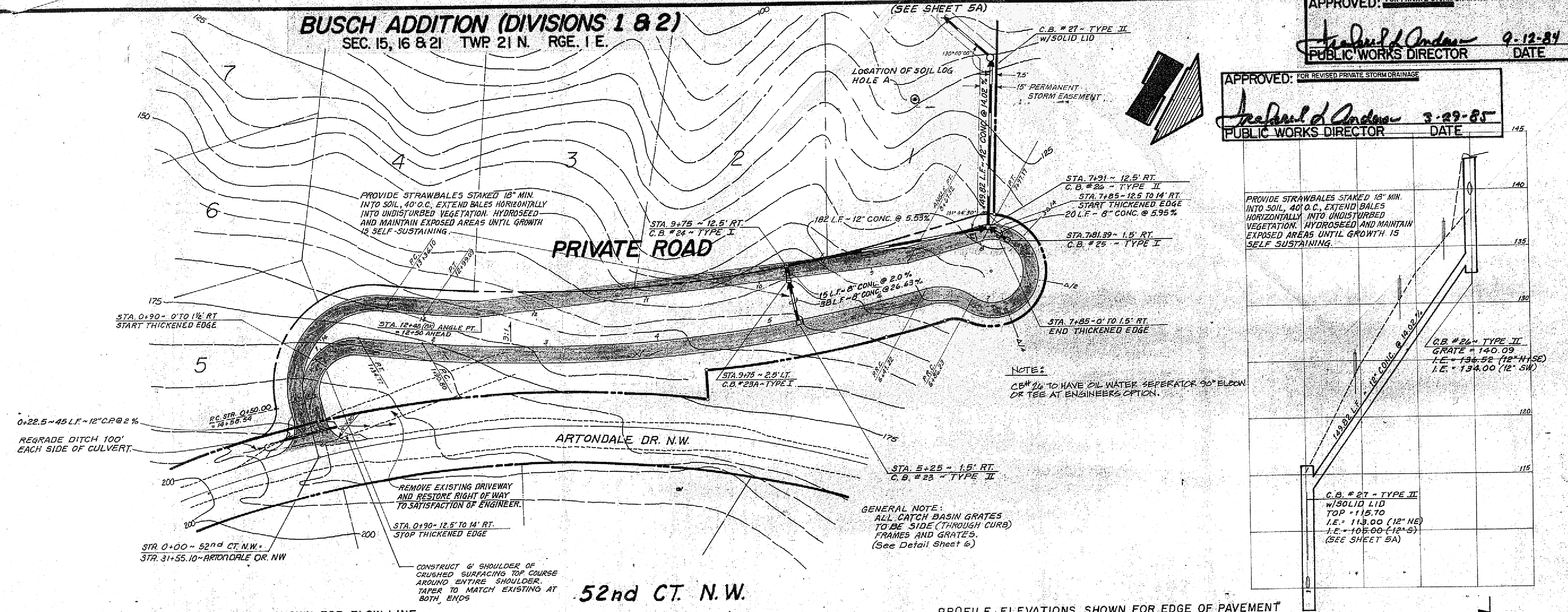


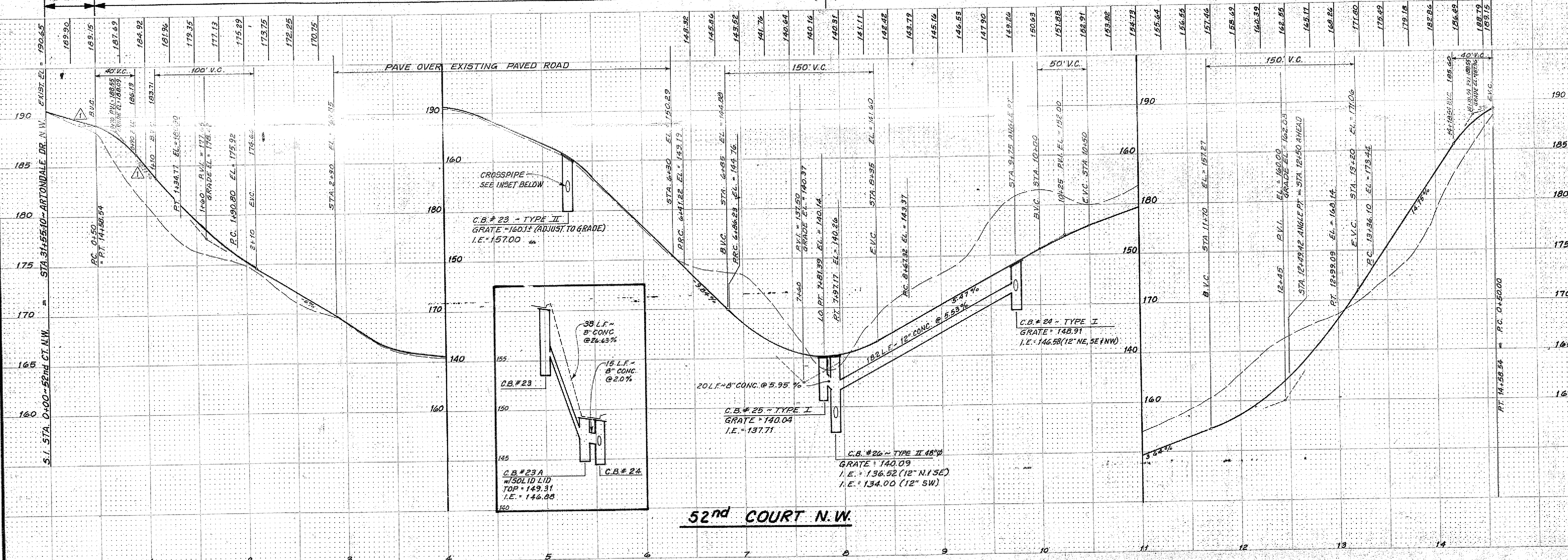
BUSCH ADDITION (DIVISIONS 1 & 2)
 SEC. 15, 16 & 21 TWP. 21 N. RGE. 1 E.

APPROVED FOR PRIVATE STORM DRAINAGE AND ACCESS ONLY
Richard J. Anderson 9-12-84
 PUBLIC WORKS DIRECTOR DATE

APPROVED FOR REVISED PRIVATE STORM DRAINAGE
Richard J. Anderson 3-29-85
 PUBLIC WORKS DIRECTOR DATE



PROFILE ELEVATIONS SHOWN FOR FLOW LINE



REVISIONS
 1. Revised Infiltration System (C.B.#21, C.B.#22, C.B.#23, C.B.#24, C.B.#25, C.B.#26, C.B.#27, C.B.#27A)
 2. Revised Road Infiltration System No.1 Profile
 3. Revised Road Infiltration System No.1 Profile
 4. Revised Road Infiltration System No.1 Profile
 5. Revised Road Infiltration System No.1 Profile
 6. Revised Road Infiltration System No.1 Profile
 7. Revised Road Infiltration System No.1 Profile
 8. Revised Road Infiltration System No.1 Profile
 9. Revised Road Infiltration System No.1 Profile
 10. Revised Road Infiltration System No.1 Profile
 11. Revised Road Infiltration System No.1 Profile
 12. Revised Road Infiltration System No.1 Profile
 13. Revised Road Infiltration System No.1 Profile
 14. Revised Road Infiltration System No.1 Profile
 15. Revised Road Infiltration System No.1 Profile
 16. Revised Road Infiltration System No.1 Profile
 17. Revised Road Infiltration System No.1 Profile
 18. Revised Road Infiltration System No.1 Profile
 19. Revised Road Infiltration System No.1 Profile
 20. Revised Road Infiltration System No.1 Profile
 21. Revised Road Infiltration System No.1 Profile
 22. Revised Road Infiltration System No.1 Profile
 23. Revised Road Infiltration System No.1 Profile
 24. Revised Road Infiltration System No.1 Profile
 25. Revised Road Infiltration System No.1 Profile
 26. Revised Road Infiltration System No.1 Profile
 27. Revised Road Infiltration System No.1 Profile
 28. Revised Road Infiltration System No.1 Profile
 29. Revised Road Infiltration System No.1 Profile
 30. Revised Road Infiltration System No.1 Profile
 31. Revised Road Infiltration System No.1 Profile
 32. Revised Road Infiltration System No.1 Profile
 33. Revised Road Infiltration System No.1 Profile
 34. Revised Road Infiltration System No.1 Profile
 35. Revised Road Infiltration System No.1 Profile
 36. Revised Road Infiltration System No.1 Profile
 37. Revised Road Infiltration System No.1 Profile
 38. Revised Road Infiltration System No.1 Profile
 39. Revised Road Infiltration System No.1 Profile
 40. Revised Road Infiltration System No.1 Profile
 41. Revised Road Infiltration System No.1 Profile
 42. Revised Road Infiltration System No.1 Profile
 43. Revised Road Infiltration System No.1 Profile
 44. Revised Road Infiltration System No.1 Profile
 45. Revised Road Infiltration System No.1 Profile
 46. Revised Road Infiltration System No.1 Profile
 47. Revised Road Infiltration System No.1 Profile
 48. Revised Road Infiltration System No.1 Profile
 49. Revised Road Infiltration System No.1 Profile
 50. Revised Road Infiltration System No.1 Profile
 51. Revised Road Infiltration System No.1 Profile
 52. Revised Road Infiltration System No.1 Profile
 53. Revised Road Infiltration System No.1 Profile
 54. Revised Road Infiltration System No.1 Profile
 55. Revised Road Infiltration System No.1 Profile
 56. Revised Road Infiltration System No.1 Profile
 57. Revised Road Infiltration System No.1 Profile
 58. Revised Road Infiltration System No.1 Profile
 59. Revised Road Infiltration System No.1 Profile
 60. Revised Road Infiltration System No.1 Profile
 61. Revised Road Infiltration System No.1 Profile
 62. Revised Road Infiltration System No.1 Profile
 63. Revised Road Infiltration System No.1 Profile
 64. Revised Road Infiltration System No.1 Profile
 65. Revised Road Infiltration System No.1 Profile
 66. Revised Road Infiltration System No.1 Profile
 67. Revised Road Infiltration System No.1 Profile
 68. Revised Road Infiltration System No.1 Profile
 69. Revised Road Infiltration System No.1 Profile
 70. Revised Road Infiltration System No.1 Profile
 71. Revised Road Infiltration System No.1 Profile
 72. Revised Road Infiltration System No.1 Profile
 73. Revised Road Infiltration System No.1 Profile
 74. Revised Road Infiltration System No.1 Profile
 75. Revised Road Infiltration System No.1 Profile
 76. Revised Road Infiltration System No.1 Profile
 77. Revised Road Infiltration System No.1 Profile
 78. Revised Road Infiltration System No.1 Profile
 79. Revised Road Infiltration System No.1 Profile
 80. Revised Road Infiltration System No.1 Profile
 81. Revised Road Infiltration System No.1 Profile
 82. Revised Road Infiltration System No.1 Profile
 83. Revised Road Infiltration System No.1 Profile
 84. Revised Road Infiltration System No.1 Profile
 85. Revised Road Infiltration System No.1 Profile
 86. Revised Road Infiltration System No.1 Profile
 87. Revised Road Infiltration System No.1 Profile
 88. Revised Road Infiltration System No.1 Profile
 89. Revised Road Infiltration System No.1 Profile
 90. Revised Road Infiltration System No.1 Profile
 91. Revised Road Infiltration System No.1 Profile
 92. Revised Road Infiltration System No.1 Profile
 93. Revised Road Infiltration System No.1 Profile
 94. Revised Road Infiltration System No.1 Profile
 95. Revised Road Infiltration System No.1 Profile
 96. Revised Road Infiltration System No.1 Profile
 97. Revised Road Infiltration System No.1 Profile
 98. Revised Road Infiltration System No.1 Profile
 99. Revised Road Infiltration System No.1 Profile
 100. Revised Road Infiltration System No.1 Profile

BUSCH ADDITION
 PAVING & DRAINAGE PLAN & PROFILE
 CITIZENS SERVICE CORP.

STEPAN & ASSOCIATES, Inc.
 Engineering, Planning, Surveying
 970 So. 35th Street, Suite A, Federal Way, Washington 98003
 Telephone: (206) 872-2888, Fax: (206) 872-4771

