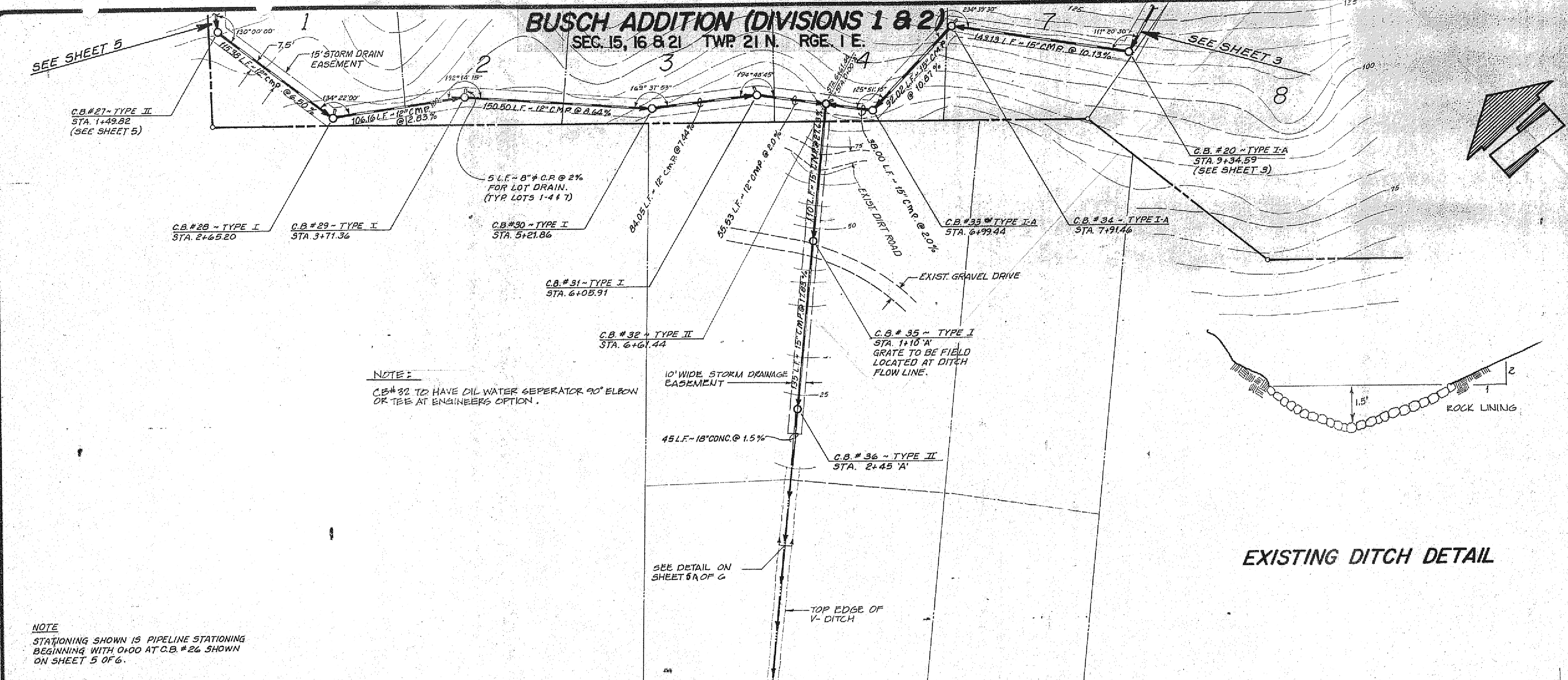


BUSCH ADDITION (DIVISIONS 1 & 2)

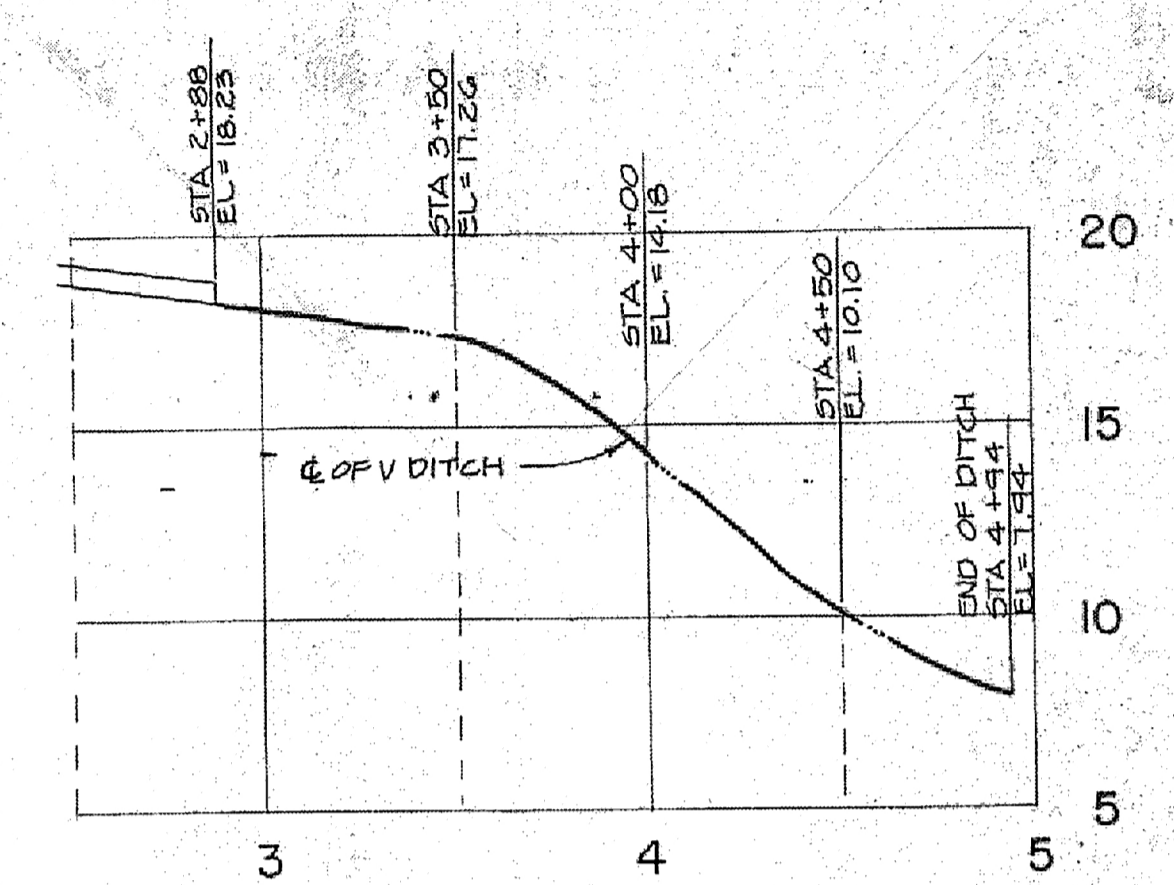
SEC. 15, 16 & 21 TWP. 21 N. RGE. 1 E.

APPROVED: FOR PRIVATE STORM DRAINAGE AND ACCESS ONLY
 PUBLIC WORKS DIRECTOR DATE
 APPROVED: FOR REVISED PRIVATE STORM DRAINAGE
Donald Anderson 3-29-85
 PUBLIC WORKS DIRECTOR DATE



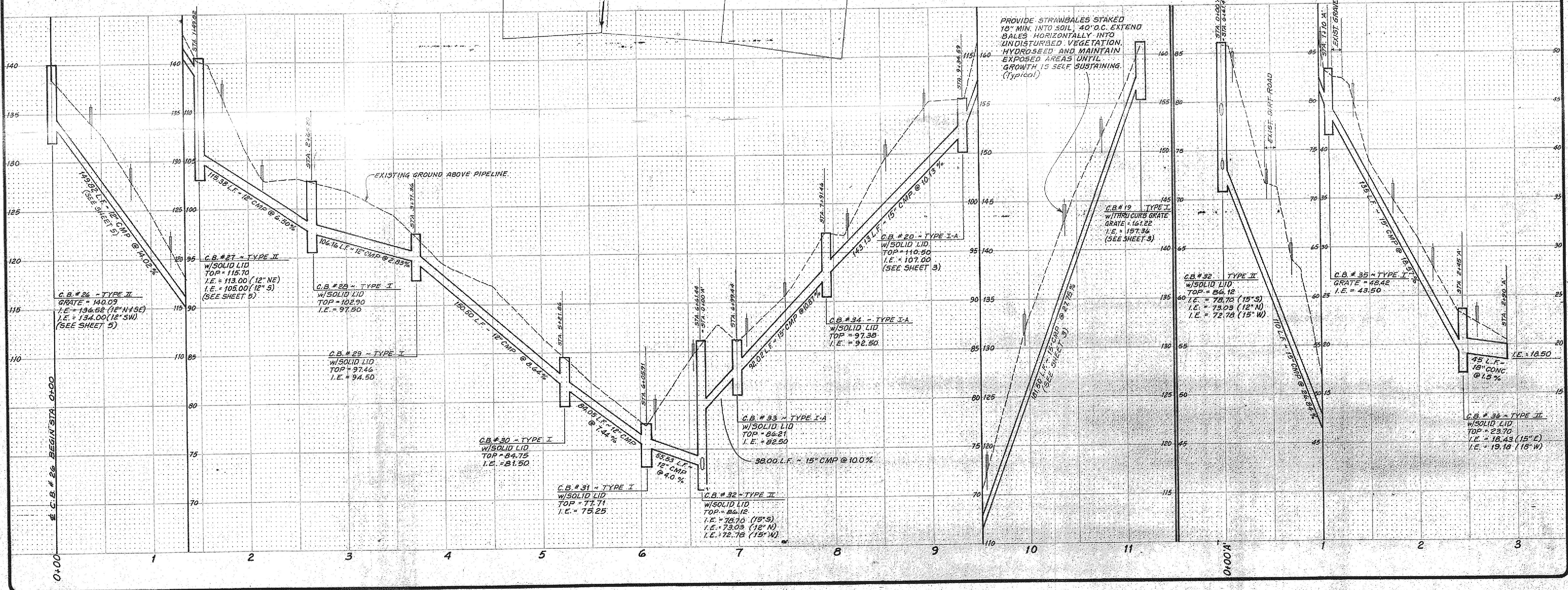
NOTE:
 C.B. #32 TO HAVE OIL WATER SEPARATOR 90° ELBOW OR TEE AT ENGINEER'S OPTION.

NOTE:
 STATIONING SHOWN IS PIPELINE STATIONING BEGINNING WITH 0+00 AT C.B. #26 SHOWN ON SHEET 5 OF 6.



EXISTING DITCH DETAIL

DITCH PROFILE



REVISIONS
 DESIGN: G.M.M. CHECKED: DATE: 10-84
 DRAWING: J.H.D. SCALE: 1" = 50' / 1/4" = 1' = 5'



BUSCH ADDITION
 DRAINAGE & OUTFALL PLAN & PROFILE
 CITIZENS SERVICE CORP.
 BOTHELL, WASHINGTON

STAPAN & ASSOCIATES, Inc.
 930 So. 334th Street, Suite A, Federal Way, Washington 98003
 Telephone: (206) 875-7851, Seattle: (206) 427-4771

